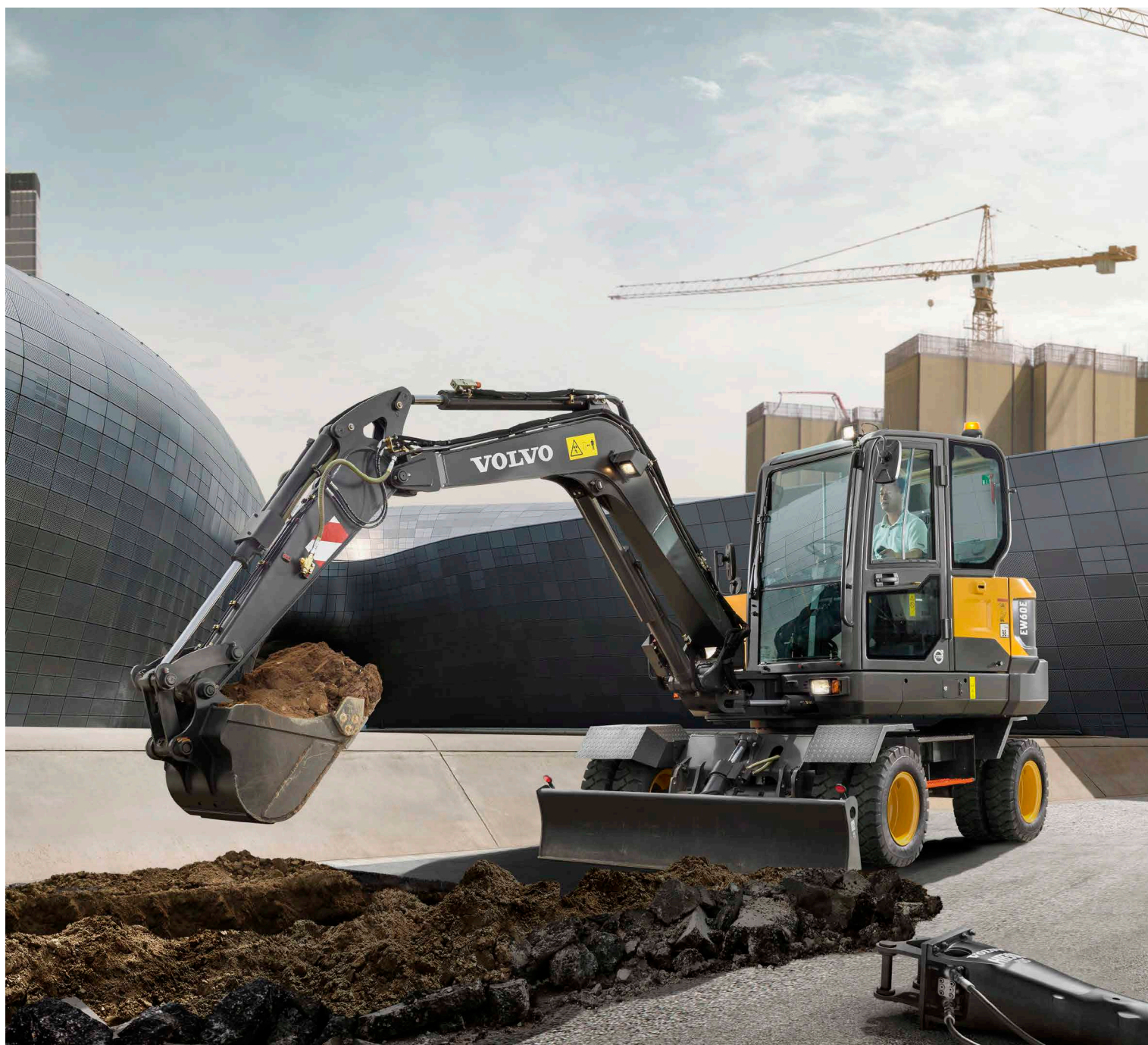


Volvo Construction Equipment
Building Tomorrow



EW60E

Volvo Excavators 5.55-6.96 t / 12,240-15,350 lb 47.3 kW



Space and comfort to work

The EW60E features an innovative cab design for a comfortable and more productive operator environment. Well-designed ergonomics and a modern LCD display give you perfect control in all operations. Plenty of storage space is available for personal belongings.

Operator convenience

Ample storage space is available for operator comfort and convenience. A phone tray, two power sockets, cup holder and three other large storage areas makes the Volvo cab a more convenient working environment.



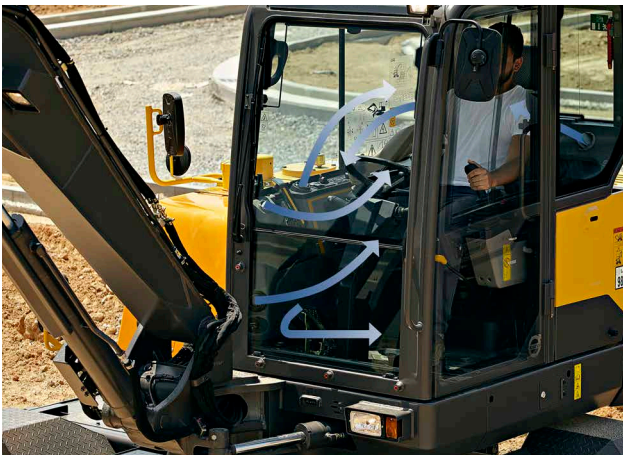
Operator visibility

All-round visibility is enhanced by thin pillars, large glazed area and a large wiper blade. The rear view camera secures a better view for perfect and safe control through the 7" color LCD display. This ensures there are no blind spots even in the most confined working areas.



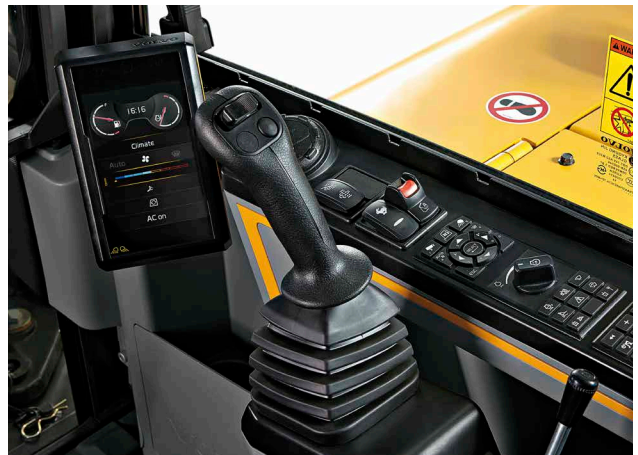
Work in comfort

The comfortable and adjustable seat makes it easier for the operator to work hard all day and feel less tired by the end of it. The cab's air conditioning is efficient and in automatic mode, the temperature remains at a set level. Six adjustable vents allow for optimal airflow in the cab.



Ease of control

Control your machine with minimal effort in order to get more done in less time. The keypad groups all controls on the right hand side and the 7" color LCD screen displays all machine information for access to functions through its easy to use menus. Through the hot keys, the operator can directly access pre-set functions for added convenience. The proportional joystick provides excellent grip, and the roller fits your thumb perfectly for easy and precise control.





LARGER CAB

A comfortable working space results in better operation, increasing production and reducing fatigue. The cab design creates space behind the seat, allowing the operator to move more freely. The new generation Volvo Cab features excellent visibility and reduced noise levels.



BOOSTED PERFORMANCE

Do more in less time with outstanding combined digging efforts, powerful travel force, fluid swing force and optimal lifting capacity. The EW60E has been designed to tackle the most challenging job sites and contracts using the powerful Volvo Tier 4 final engine and adjustable hydraulic flow. Its well-balanced driveline delivers optimum performance whether working on the job site or on the move.

Power for performance

Climb quick, swing smooth, dig hard and load fast with the EW60E. The traction, swing force and lifting capacity gets you results, fast. This versatile and powerful machine can be tailored for any job and is suitable for a wide range of applications.

Powerful Volvo Tier 4 final engine

Give your job site a boost and achieve fast results. Great power and effective cooling ensure optimized performance in any climate. For the ultimate combination of power and performance, the Tier 4 final engine helps to push through challenging conditions.



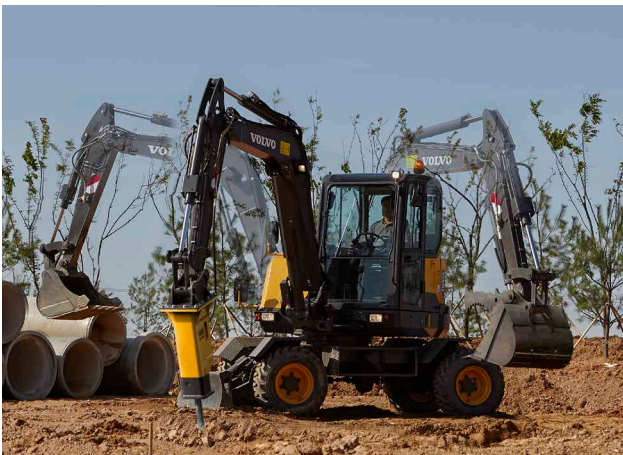
Smooth operation

Smooth combined operations means you can make very accurate and precise movements. With responsive controls the machine does exactly what the operator intends for less fatigue and fluent movement.



Versatility

Perform on any job site, whether you're working in a confined space or major construction area. The machine's compact design, long arm, optional fixed boom and offset boom, long dozer blade, auxiliary hydraulic and thumb piping makes the machine suitable for a wide range of jobs and applications.



Wheeled performance

A top speed up to 18 mi/h (30km/h) and the four wheel drive allow you to go on and off-road for better mobility. Drive the machine easily between locations and access hard to reach job sites to save time and keep your machine in prime condition.



Profit in your business

The EW60E is designed and built to increase your profitability and keep you working for longer. To reduce your running costs it features excellent service access, convenient maintenance points and Volvo's auto engine shutdown feature. With outstanding fuel efficiency this durable and reliable machine secures your costs and increases your uptime.

Low fuel consumption

The Volvo engine and hydraulics together offer superior fuel efficiency. The standard auto idle feature helps to reduce your fuel consumption even further and increase your profits.



Auto engine shutdown

A unique offering from Volvo, the engine stops automatically after a preselected time, lowering fuel costs and noise. A stopped hour meter reduces maintenance costs and increases the resale value of the machine.



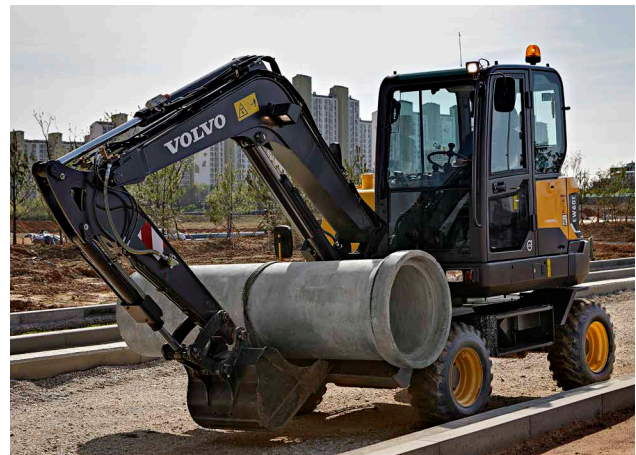
MATRIS and VCADS Pro

By working with your dealer and using Volvo MATRIS software you can analyze operator behavior to improve efficiency, boost productivity and reduce your fuel and maintenance costs. Volvo also offers the VCADS Pro diagnostic system, making it easy to control your machine.



Durability and reliability

The EW60E is designed with the same high quality as all Volvo machines, including robust transmission system and axles, so you can be assured it's durable and reliable on your job site. You can depend on your machine to perform and work hard for peace of mind.





SERVICEABILITY

Keep your machine up and running with a number of features combined to increase machine availability and reduce downtime. Ground level service access, including great access to the main control valve, convenient greasing points, a large tool box in the lower structure and an easy to clean cooling unit all reduce service time and maintenance costs. Check service intervals easily through the in-cab screen, which shows reminders when maintenance is needed.



ATTACHMENTS VERSATILITY

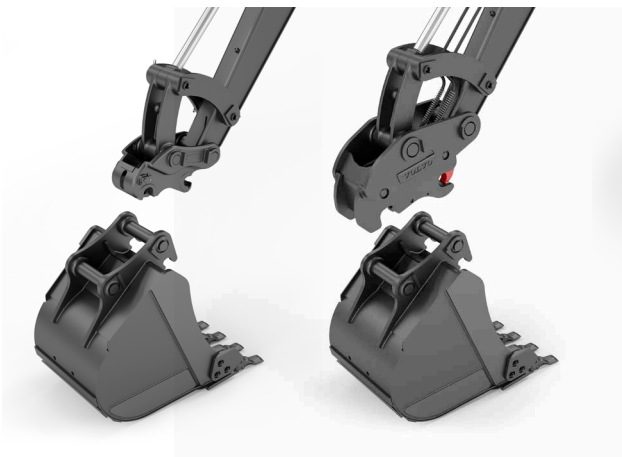
The machine's attachment can be easily changed to save time and costs. Its design, hydraulics, piping and in-cab switches combined with the Volvo attachments range allows the EW60E to take on a variety of tasks. Volvo attachments work in harmony with the machine to deliver maximum productivity.

One machine, many job sites

Volvo offers a wide range of durable attachments that are suitable for any job site, including utilities, building, agriculture, landscaping and forestry. Volvo attachments are an integrated part of the excavator for which they're intended – delivering maximum productivity and versatility.

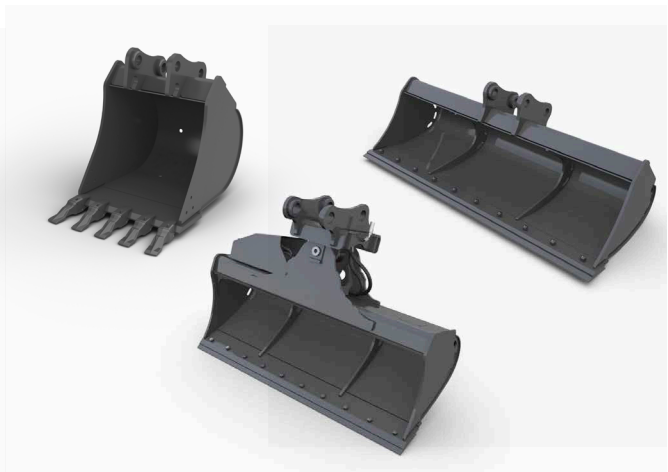
Quick coupler

Both the mechanical and the hydraulic quick couplers allow a complete range of buckets to be changed quickly and efficiently.



Buckets

A complete range of buckets from general purpose reinforced buckets to ditching buckets, allow the machine to work on many job sites for a wide range of applications. The durable buckets can work in loose gravel, crushed rock, dirt and soil.



Breaker

Volvo's durable hydraulic breakers have been designed for ultimate compatibility with Volvo excavators. The wide range of breaker tools (or bits) has been built to break all kinds of materials and combines excellent performance with low noise and vibration levels.



Thumb

Designed to work with both Volvo direct fit buckets and quick coupler, the Volvo thumb makes many tasks possible, including piling, placing, loading, lifting and carrying.



A compact machine with big potential

BOOSTED PERFORMANCE

Do more in less time with outstanding combined digging efforts, powerful travel force, fluid swing force and optimal lifting capacity.

Smooth operation

Smooth combined operations means you can make very accurate and precise movements.

MATRIS and VCADS Pro

Volvo MATRIS analyses operator behaviour, improving efficiency and productivity. VCADS Pro helps to control your machine.

ATTACHMENTS VERSATILITY

The Volvo attachments range allows the machine to take on a variety of tasks for a wide range of jobs and applications.

Powerful Volvo Tier 4 final engine

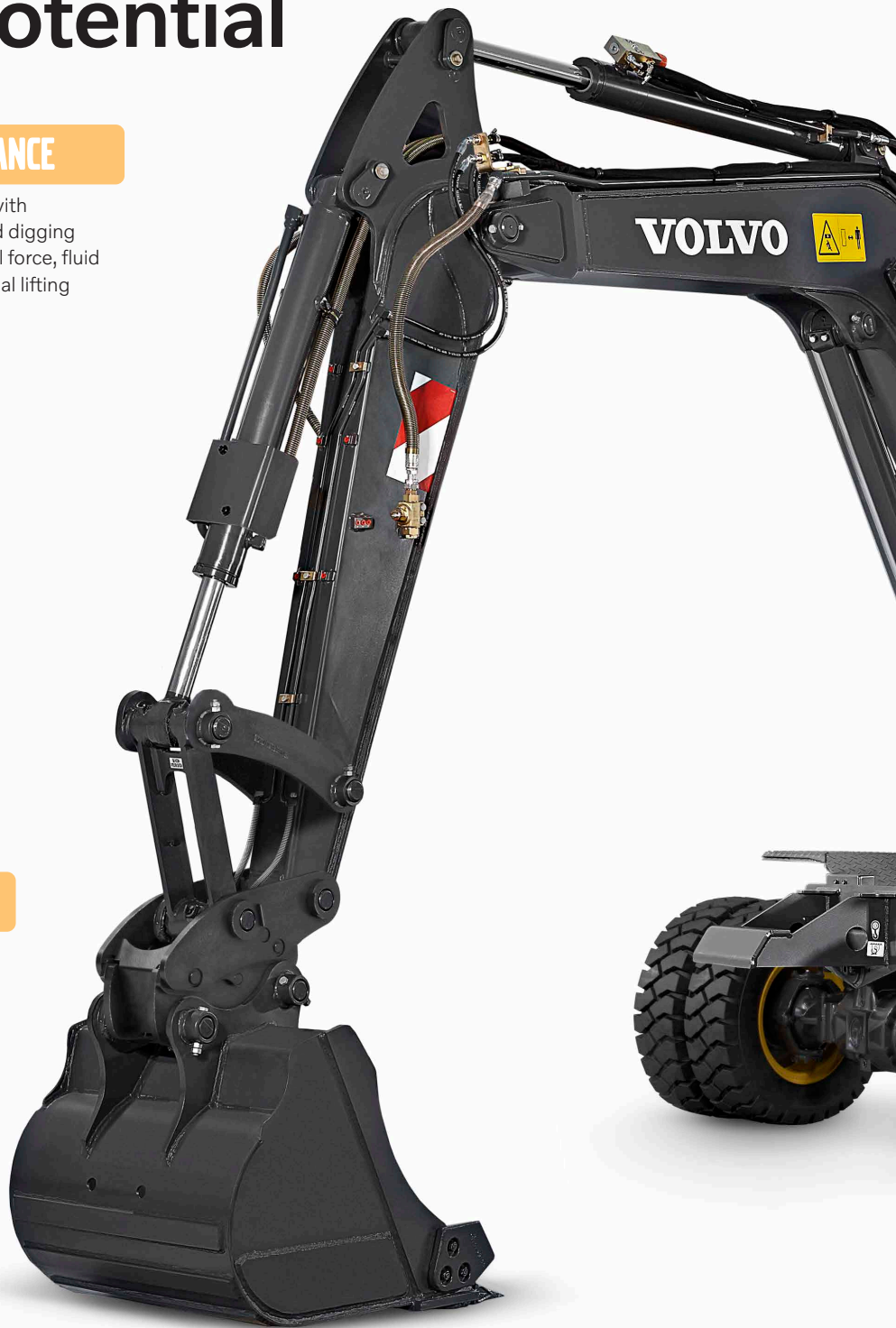
For the ultimate combination of power and performance, the engine helps to push through challenging conditions.

Auto engine shutdown

The auto engine shutdown provides lower fuel costs, less noise, much lower maintenance costs and a greater resale value.

ECO mode

Volvo's unique ECO mode improves fuel efficiency without any loss of performance in most operating conditions.



LARGER CAB

A comfortable working space results in better operation, increasing production and reducing fatigue.

Ease of control

The keypad groups all controls on the right hand side and the LCD screen displays all machine information for access to functions.

Operator convenience

Ample storage space in the cab is available for operator comfort and convenience.

SERVICEABILITY

Ground level service access, including great access to the main control valve, convenient greasing points and easy to clean cooling unit reduce service time.

Wheeled performance

A top speed up to 30km/h and the four wheel drive allow you to go on and off-road for better mobility.

CUSTOMER SUPPORT AGREEMENTS

Customer Support Agreements offer preventive maintenance, total repairs and a number of uptime services.



Adding value to your business

Being a Volvo customer means having a complete set of services at your fingertips. Volvo can offer you a long-term partnership, protect your revenue and provide a full range of customer solutions using high quality parts, delivered by passionate people. Volvo is committed to increasing the positive return on your investment and maximising uptime.

Complete Solutions

Volvo has the right solution for you. So why not let us provide all your needs throughout the whole life cycle of your machine? By

listening to your requirements, we can reduce your total cost of ownership and increase your revenue.



Genuine Volvo Parts

Our attention to detail is what makes us stand out. This proven concept acts as a solid investment in your machine's future. Parts are extensively tested and approved because every part is vital for uptime and performance. Only by using Genuine Volvo Parts, can you be sure that your machine retains the renowned Volvo quality.

Service Network

In order to respond to your needs faster, a Volvo expert is on their way to your job site from one of our Volvo facilities. With our extensive infrastructure of technicians, workshops and dealers, Volvo has a comprehensive network to fully support you using local knowledge and global experience.





CUSTOMER SUPPORT AGREEMENTS

The range of Customer Support Agreements offer preventive maintenance, total repairs and a number of uptime services. Volvo uses the latest technology to monitor machine operation and status, giving you advice to increase your profitability. By having a Customer Support Agreement you are in control of your service costs.

Volvo EW60E in detail

Engine

The new engine which provides excellent performance is equipped with a four-cylinder, vertical, electronic controlled high pressure fuel injectors, in-line turbo charger water cooled diesel engine. This engine fully meets the demands of the latest Tier 4f emissions regulations.

Engine	Volvo	D2.6H
Max. power at	r/min (r/s)	2,400 (40)
Net (ISO9249/SAEJ1349)	kW (hp)	45.2 (60.6)
Gross (ISO 14396/SAE J1995)	kW (hp)	47.3 (63.4)
Max. torque	Nm (ft lbf)	222 (163)
at engine speed	r/min (r/s)	1,500 (25)
No. of cylinders		4
Displacement	l (in ³)	2.6 (160)
Bore	mm (in)	87 (3.4)
Stroke	mm (in)	110 (4.3)

Electrical system

Voltage	V	12
Batteries	V	1 x 12
Battery capacity	Ah	100
Alternator	V/Ah	12/90
Start motor	V - kW	12 - 2.5

Undercarriage

Drive train: One single variable axial-piston motor mounted to the two-step, Power Shift gearbox gives power to front and rear axles.
Framework: All-welded robust torsion box frame.
Front axle: Robust excavator axle with automatic or operator controlled front axle oscillation lock.

Oscillation	± °	5
with mudguards	± °	5
Tire	type	12-16.5 12PR
Tractive force (net)	kN (lbf)	29 (6,519)
Travel speed, on road	km/h (mi/h)	20/30 (12/19)
Travel speed, off road	km/h (mi/h)	10 (6.2)
Min. turning radius	m (ft)	5.1 (16.7)
Travel speeds may depend on to local regulations		

Brake system

Service brakes: servo-hydraulically manoeuvred self-adjusting wet multidiscs with two separate brake circuits.
Parking brake: negative wet disc in gear housing, spring applied and pressure released.
Digging brake: service brake with mechanical lock system.
Security system: The 2-circuit travel brakes are supplied with two accumulators in the event of failure in the service brake system.

Swing system

The swing system is feed from the hydraulic system, eliminating the need for any additional maintenance to gear oil replenishing.
Built-in parking brake: Parking brake is built into the hydraulic motor, enabling safer parking on an incline.
Shockless function: Pressure relive valves are fitted into the swing circuit to eliminate shocks for smooth operation when changing direction.

Max. slew speed	r/min	10
Max. slew torque	kNm (ft lbf)	11.6 (8,556)

Cab

Refrigerant of the type R134a is used when this machine is equipped with air conditioning. Contains fluorinated greenhouse gas R134a, Global Warming Potential 1.430 t CO₂-eq

Sound Level

Sound pressure level in cab according to ISO 6396		
L _{pA}	dB	78
External sound level according to ISO 6395 and EU Noise Directive 2000/14/EC		
L _{WA}	dB	98

Hydraulic system

Open-center, negative hydraulic system providing accurate controllability. The following working modes are included in the system:

Parking mode (P): Parking position for optimal safety.

Travel mode (T): Engine speed is controlled by travel pedal stroke and mode selection switch for low fuel consumption and noise. Work equipment are not able to move at this mode for optimal safety.

Working mode (W): Full working flow with adjustable engine rpm for normal working and best speed utilisation.

Main pump (Type: Variable-displacement pump)

Max. flow	l/min (gal/min)	2 x 60 (2 x 15.9)
-----------	-----------------	-------------------

Pilot pump (Type: Gear pump)

Max. flow	l/min (gal/min)	1 x 21.4 (1 x 5.7)
-----------	-----------------	--------------------

Swing + steering pump (Type: Low noise gear pump)

Max. flow	l/min (gal/min)	1 x 38.9 (1 x 10.3)
-----------	-----------------	---------------------

Relief valve setting pressure

Implement	MPa (psi)	23 (3,263)
Travel system	MPa (psi)	23 (3,263)
Slew system	MPa (psi)	19 (2,698)
Pilot system	MPa (psi)	3.1 (454)

Hydraulic Cylinders

Boom		1
Bore x Stroke	ø x mm (ø x in)	110 x 707 (4.3 x 27.8)
Boom 2nd		2
Bore x Stroke	ø x mm (ø x in)	90 x 406 (3.5 x 16)
Arm		1
Bore x Stroke	ø x mm (ø x in)	90 x 813 (3.5 x 32)
Bucket		1
Bore x Stroke	ø x mm (ø x in)	80 x 660 (3.1 x 26)
Dozer blade		1
Bore x Stroke	ø x mm (ø x in)	105 x 230 (4.1 x 9.1)
Boom swing		1
Bore x Stroke	ø x mm (ø x in)	90 x 570 (3.5 x 22.4)

Service Refill

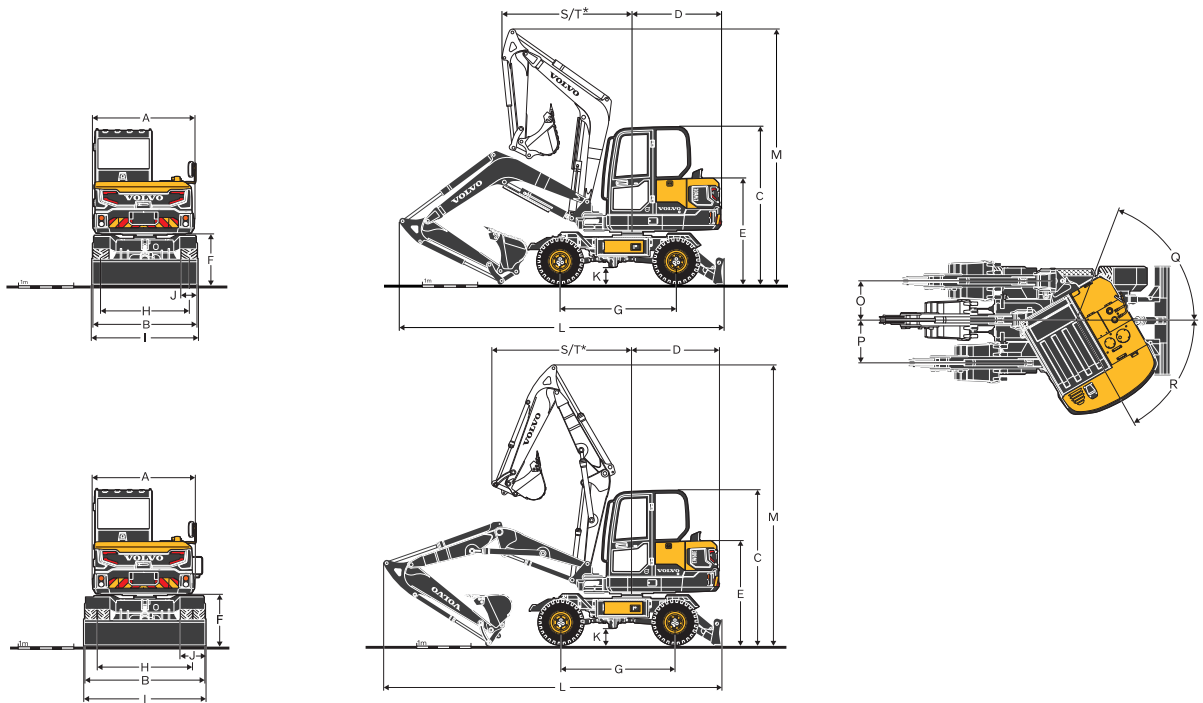
Fuel tank	l (gal)	105 (27.7)
Hydraulic system, total	l (gal)	120 (31.7)
Hydraulic tank	l (gal)	76 (20.1)
Engine oil	l (gal)	11 (2.9)
Engine coolant	l (gal)	10 (2.6)
Transmission	l (gal)	1.7 (0.4)

Total Machine Weights

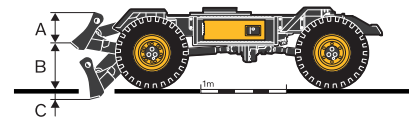
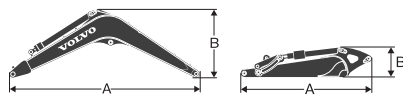
Machine with 2.9m / 9'6" boom, 1.6m / 5'3" arm, 0.142m³ / 37.5gal bucket, standard counterweight, dozer blade, without quick coupler and 75kg operator weight

With dozer blade	kg (lb)	5 920 (13,050)
------------------	---------	----------------

Specifications



DIMENSIONS		Unit		EW60E							
Boom		m	ft in	2.9	9'6"	2.9	9'6"	3.24	10'8"	3.24	10'8"
Arm		m	ft in	1.6	5'3"	1.9	6'3"	1.6	5'3"	1.9	6'3"
A	Overall width of upper structure	mm	ft in	1,845	6'1"	1,845	6'1"	1,845	6'1"	1,845	6'1"
B	Overall width	mm	ft in	1,930	6'4"	1,930	6'4"	2,200	7'3"	2,200	7'3"
C	Overall height of cab	mm	ft in	2,855	9'4"	2,855	9'4"	2,833	9'4"	2,833	9'4"
D	Tail swing radius	mm	ft in	1,650	5'5"	1,650	5'5"	1,675	5'6"	1,675	5'6"
E	Overall height of engine hood	mm	ft in	1,901	6'3"	1,901	6'3"	1,887	6'2"	1,887	6'2"
F	Counterweight clearance	mm	ft in	960	3'2"	960	3'2"	940	3'1"	940	3'1"
G	Wheel base	mm	ft in	2,100	6'11"	2,100	6'11"	2,100	6'11"	2,100	6'11"
H	Tread width	mm	ft in	1,595	5'3"	1,595	5'3"	1,714	5'7"	1,714	5'7"
I	Dozerblade width	mm	ft in	1,930	6'4"	1,930	6'4"	2,200	7'3"	2,200	7'3"
J	Tire width	mm	ft in	305	1'0"	305	1'0"	452	1'6"	452	1'6"
K	Min. ground clearance	mm	ft in	295	1'0"	295	1'0"	276	0'11"	276	0'11"
L	Overall length	mm	ft in	5,869	19'3"	5,895	19'4"	6,203	20'4"	6,220	20'5"
M	Overall height of boom raise	mm	ft in	4,599	15'1"	4,600	15'1"	5,150	16'11"	5,150	16'11"
S	Front swing radius	mm	ft in	2,352	7'9"	2,368	7'9"	2,423	7'11"	2,571	8'5"
T*	Front swing radius(Max. offset)	mm	ft in	1,386	4'7"	1,386	4'7"	1,957	6'5"	1,957	6'5"
O	Boom swing distance	mm	ft in	756	2'6"	756	2'6"	756	2'6"	756	2'6"
P	Boom swing distance	mm	ft in	863	2'10"	863	2'10"	863	2'10"	863	2'10"
Q	Boom swing angle	°		80				80			
R	Boom swing angle	°		50				50			



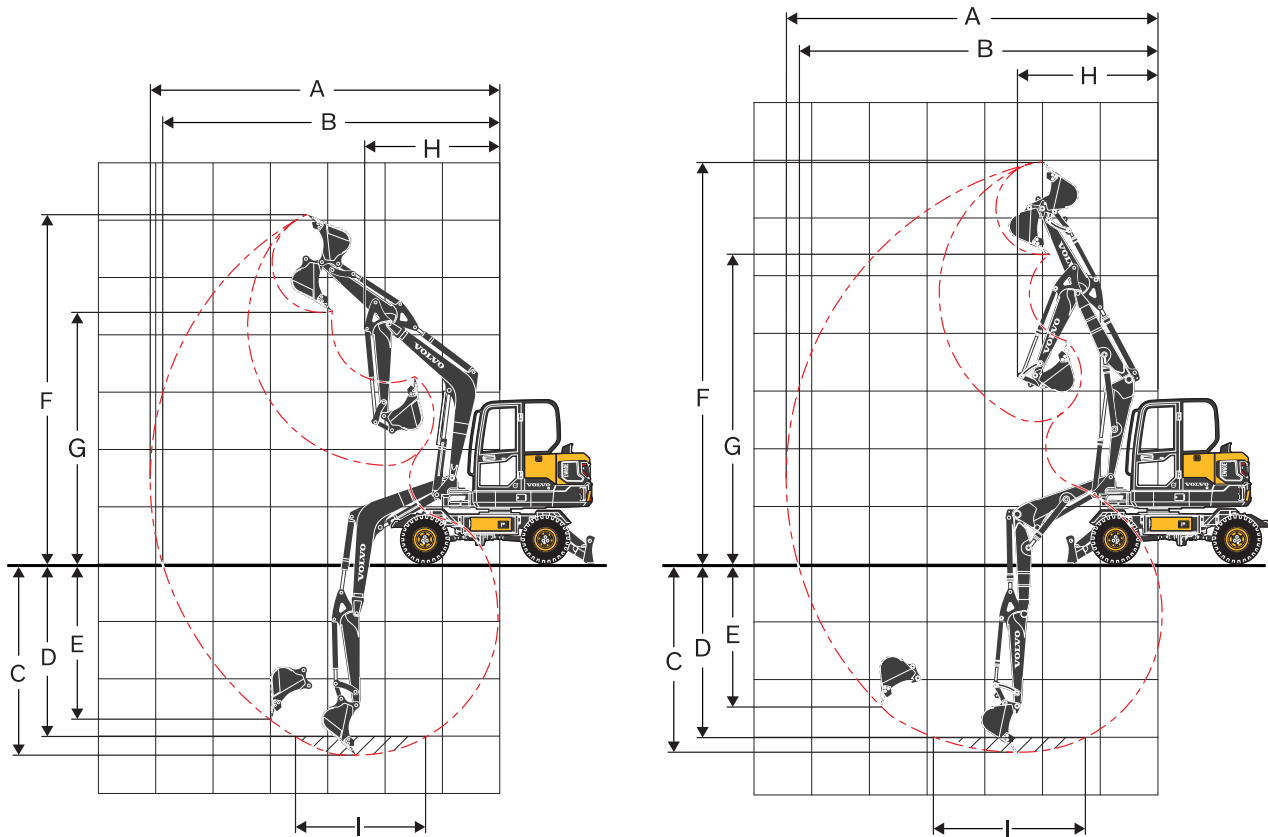
DIMENSIONS		Unit		Boom				Arm			
		m	ft in	2.9	9'6"	3.24	10'8"	1.6	5'3"	1.9	6'3"
A	Length	mm	ft in	3,008	9'10"	3,362	11'0"	2,102	6'11"	2,402	7'11"
B	Height	mm	ft in	1,169	3'10"	865	2'10"	488	1'7"	497	1'8"
	Width	mm	ft in	336	1'1"	532	1'9"	300	1'0"	300	1'0"
	Weight	kg	lb	352.4	780	489	1,080	206	450	181	400

Boom * Includes cylinder, piping and pin, excludes boom cyl. Pin

Arm * Includes cylinder, linkage and pin

DIMENSIONS		Unit		STD Dozer blade		Wide Dozer blade	
		mm	ft in				
A	Height	mm	ft in	465	1'6"	465	1'6"
	Width	mm	ft in	1,930	6'4"	2,200	7'3"
B	Lifting height	mm	ft in	440	1'5"	440	1'5"
C	Digging depth	mm	ft in	140	0'6"	140	0'6"

Specifications



WORKING RANGES

Description		Unit									
Boom		m	ft in	2.9		9'6"		3.24		10'8"	
Arm		m	ft in	1.6	1.9	5'3"	6'3"	1.6	1.9	5'3"	6'3"
A	Max. digging reach	mm	ft in	6,024	6,313	19'9"	20'9"	6,432	6,729	21'1"	22'1"
B	Max. digging reach on ground	mm	ft in	5,810	6,111	19'1"	20'1"	6,239	6,546	20'6"	21'6"
C	Max. digging depth	mm	ft in	3,292	3,592	10'10"	11'9"	3,304	3,603	10'10"	11'10"
D	Max. digging depth (l=2 440 mm level)	mm	ft in	2,905	3,188	9'6"	10'6"	3,119	3,432	10'1"	11'2"
E	Max. vertical wall digging depth	mm	ft in	2,368	2,642	7'9"	8'8"	2,786	3,028	8'3"	8'11"
F	Max. cutting height	mm	ft in	6,007	6,210	19'8"	20'4"	6,924	7,201	22'9"	23'7"
G	Max. dumping height	mm	ft in	4,443	4,647	14'7"	15'3"	5,320	5,597	17'6"	18'6"
H	Min. front swing radius	mm	ft in	2,350	2,367	7'9"	7'9"	2,423	2,550	7'11"	8'5"

DIGGING FORCES WITH DIRECT FIT BUCKET

				1.6 m / 5'3" Arm		1.9 m / 6'3" Arm	
Breakout force (bucket)	SAE J1179	kN	lbf	37.7	8,475	37.7	8,475
	ISO 6015	kN	lbf	43.3	9,734	43.3	9,734
Tearout force (arm)	SAE J1179	kN	lbf	28.2	6,340	25.0	5,620
	ISO 6015	kN	lbf	28.8	6,474	25.4	5,710
Rotation angle, bucket			°	196			

LIFTING CAPACITY EW60E

Lifting capacity at the arm end without bucket.

For lifting capacity including bucket. Simply subtract actual weight of the direct fit bucket or the bucket with quick coupler from the following values.

	Lifting hook related to ground level	1.0 m / 3.3 ft		2.0 m / 6.6 ft		3.0 m / 9.0 ft		4.0 m / 13.2 ft		5.0 m / 16.5 ft		Max. reach		
		Along UC	Across UC	Along UC	Across UC	Along UC	Across UC	Along UC	Across UC	Along UC	Across UC	Along UC	Across UC	Max.
Boom: 2.9 m / 9'6" Arm: 1.6 m / 5'3" Shoe: Single wheel CWT: 350 kg / 772 lb Machine: Front direction Dozer blade: Down	5.0 m kg											*1,520	1,470	3.4 m
	16.5 ft lb											*3,390	3,290	11.2 ft
	4.0 m kg							*1,520	1,170			*1,270	980	4.4 m
	13.2 ft lb							*3,360	2,550			*2,800	2,180	14.5 ft
	3.0 m kg							*1,610	1,150			*1,190	810	4.9 m
	9.9 ft lb							*3,540	2,510			*2,620	1,790	16.2 ft
	2.0 m kg					*2,540	1,690	*1,840	1,100	*1,530	780	*1,200	740	5.2 m
	6.6 ft lb					*5,530	3,690	*4,030	2,410	*3,360	1,720	*2,640	1,630	17.0 ft
	1.0 m kg					*3,030	1,580	*2,040	1,050	*1,570	770	*1,280	720	5.2 m
	3.3 ft lb					*6,620	3,460	*4,470	2,310	*3,440	1,680	*2,820	1,600	17.1 ft
	0.0 m kg			*2,110	*2,110	*3,040	1,540	*2,070	1,030			*1,470	760	5.0 m
	0.0 ft lb			*4,700	*4,700	*6,660	3,370	*4,540	2,240			*3,230	1,690	16.3 ft
	-1.0 m kg	*3,000	*3,000	*4,060	3,020	*2,650	1,540	*1,800	1,020			*1,420	890	4.5 m
	-3.3 ft lb	*6,630	*6,630	*8,880	6,570	*5,790	3,370	*3,940	2,240			*3,130	1,960	14.6 ft
Boom: 2.9 m / 9'6" Arm: 1.6 m / 5'3" Shoe: Single wheel CWT: 350 kg / 772 lb Machine: Front direction Dozer blade: Up	-2.0 m kg					*2,450	*2,450	*1,680	1,590			*1,180	*1,180	3.5 m
	-6.6 ft lb			*5,330	*5,330	*3,630	3,470					*2,590	*2,590	11.5 ft
	5.0 m kg											*1,520	1,380	3.4 m
	16.5 ft lb											*3,390	3,100	11.2 ft
	4.0 m kg							*1,520	1,100			*1,270	920	4.4 m
	13.2 ft lb							*3,360	2,410			*2,800	2,060	14.5 ft
	3.0 m kg							*1,610	1,080			*1,190	760	4.9 m
	9.9 ft lb							*3,540	2,360			*2,620	1,690	16.2 ft
	2.0 m kg					*2,540	1,580	*1,840	1,030	1,410	740	*1,200	690	5.2 m
	6.6 ft lb					*5,530	3,460	*4,030	2,270	2,960	1,610	*2,640	1,530	17.0 ft
	1.0 m kg					*3,030	1,480	1,950	990	1,390	720	*1,280	680	5.2 m
	3.3 ft lb					6,600	3,240	4,100	2,160	2,910	1,570	2,770	1,500	17.1 ft
	0.0 m kg			*2,110	*2,110	*3,040	1,440	1,920	960			1,390	710	5.0 m
	0.0 ft lb			*4,700	*4,700	6,480	3,140	4,030	2,100			2,940	1,580	16.3 ft
	-1.0 m kg	*3,000	*3,000	*4,060	2,770	*2,650	1,440	*1,800	960			*1,420	830	4.5 m
Boom: 2.9 m / 9'6" Arm: 1.6 m / 5'3" Shoe: Single wheel CWT: 350 kg / 772 lb Machine: Rear direction Dozer blade: Down	-3.3 ft lb	*6,630	*6,630	*8,880	6,040	*5,790	3,140	*3,940	2,100			*3,130	1,840	14.6 ft
	-2.0 m kg					*2,450	*2,450	*1,680	1,480			*1,180	*1,180	3.5 m
	-6.6 ft lb			*5,330	*5,330	*3,630	3,240					*2,590	*2,590	11.5 ft
	5.0 m kg											*1,520	1,470	3.4 m
	16.5 ft lb											*3,390	3,290	11.2 ft
	4.0 m kg							*1,520	1,170			*1,270	980	4.4 m
	13.2 ft lb							*3,360	2,550			*2,800	2,180	14.5 ft
	3.0 m kg							*1,610	1,150			*1,190	810	4.9 m
	9.9 ft lb							*3,540	2,510			*2,620	1,790	16.2 ft
	2.0 m kg					*2,540	1,690	*1,840	1,100	*1,530	780	*1,200	740	5.2 m
	6.6 ft lb					*5,530	3,690	*4,030	2,410	*3,360	1,720	*2,640	1,630	17.0 ft
	1.0 m kg					*3,030	1,580	*2,040	1,050	*1,570	770	*1,280	720	5.2 m
	3.3 ft lb					*6,620	3,460	*4,470	2,310	*3,440	1,680	*2,820	1,600	17.1 ft
	0.0 m kg			*2,110	*2,110	*3,040	1,540	*2,070	1,030			*1,470	760	5.0 m
Boom: 2.9 m / 9'6" Arm: 1.6 m / 5'3" Shoe: Single wheel CWT: 350 kg / 772 lb Machine: Rear direction Dozer blade: Up	0.0 ft lb			*4,700	*4,700	*6,660	3,370	*4,540	2,240			*3,230	1,690	16.3 ft
	-1.0 m kg	*3,000	*3,000	*4,060	3,020	*2,650	1,540	*1,800	1,020			*1,420	890	4.5 m
	-3.3 ft lb	*6,630	*6,630	*8,880	6,570	*5,790	3,370	*3,940	2,240			*3,130	1,960	14.6 ft
	-2.0 m kg					*2,450	*2,450	*1,680	1,590			*1,180	*1,180	3.5 m
	-6.6 ft lb			*5,330	*5,330	*3,630	3,470					*2,590	*2,590	11.5 ft
	5.0 m kg											1,370	1,380	3.4 m
	16.5 ft lb											3,090	3,100	11.2 ft
	4.0 m kg							1,100	1,100			920	920	4.4 m
	13.2 ft lb							2,410	2,410			2,060	2,060	14.5 ft
	3.0 m kg							1,080	1,080			760	760	4.9 m
	9.9 ft lb							2,360	2,360			1,690	1,690	16.2 ft
	2.0 m kg					1,570	1,580	1,030	1,030	740	740	690	690	5.2 m
	6.6 ft lb					3,450	3,460	2,270	2,270	1,620	1,610	1,540	1,530	17.0 ft
	1.0 m kg					1,470	1,480	990	990	720	720	680	680	5.2 m
	3.3 ft lb					3,230	3,240	2,160	2,160	1,580	1,570	1,500	1,500	17.1 ft
	0.0 m kg			*2,110	*2,110	1,430	1,440	960	960			720	710	5.0 m
	0.0 ft lb			*4,700	*4,700	3,130	3,140	2,100	2,100			1,580	1,580	16.3 ft
	-1.0 m kg	*3,000	*3,000	2,740	2,770	1,430	1,440	960	960			830	830	4.5 m
	-3.3 ft lb	*6,630	*6,630	5,980	6,040	3,140	3,140	2,100	2,100			1,840	1,840	14.6 ft
	-2.0 m kg					*2,450	*2,450	1,470	1,480			1,180	1,180	3.5 m
	-6.6 ft lb			*5,330	*5,330	3,230	3,240					*2,590	*2,590	11.5 ft

Notes: 1. The above loads are in compliance with SAE J1097 and ISO 10567 Hydraulic Excavator Lifting Capacity Standards. 2. Rated loads do not exceed 87% of hydraulic lifting capacity or 75% of tipping load. 3. Rated loads marked with an asterisk (*) are limited by hydraulic capacity rather than tipping load.

Specifications

LIFTING CAPACITY EW60E

Lifting capacity at the arm end without bucket.

For lifting capacity including bucket. Simply subtract actual weight of the direct fit bucket or the bucket with quick coupler from the following values.

	Lifting hook related to ground level	1.0 m / 3.3 ft		2.0 m / 6.6 ft		3.0 m / 9.0 ft		4.0 m / 13.2 ft		5.0 m / 16.5 ft		Max. reach		
		Along UC	Across UC	Along UC	Across UC	Along UC	Across UC	Along UC	Across UC	Along UC	Across UC	Along UC	Across UC	Max.
Boom: 2.9 m / 9'6" Arm: 1.9 m / 6'3" Shoe: Single wheel CWT: 350 kg / 772 lb Machine: Front direction Dozer blade: Down	5.0 m kg											*1,200	*1,200	3.9 m
	16.5 ft lb											*2,670	*2,670	12.7 ft
	4.0 m kg							*1,350	1,180			*1,030	870	4.8 m
	13.2 ft lb							*2,990	2,580			*2,280	1,930	15.6 ft
	3.0 m kg							*1,470	1,150	*1,380	800	*970	730	5.3 m
	9.9 ft lb							*3,230	2,520	*3,040	1,750	*2,150	1,620	17.2 ft
	2.0 m kg					*2,300	1,710	*1,720	1,100	*1,450	780	*980	670	5.5 m
	6.6 ft lb					*5,010	3,740	*3,770	2,410	*3,200	1,710	*2,170	1,480	18.0 ft
	1.0 m kg					*2,890	1,580	*1,970	1,050	*1,530	750	*1,040	660	5.5 m
	3.3 ft lb					*6,330	3,470	*4,310	2,290	*3,370	1,660	*2,300	1,450	18.0 ft
	0.0 m kg	*1,330	*1,330	*2,060	*2,060	*3,050	1,520	*2,060	1,010	*1,520	740	*1,170	690	5.3 m
	0.0 ft lb	*2,930	*2,930	*4,600	*4,600	*6,680	3,330	*4,520	2,210	*3,320	1,620	*2,580	1,520	17.3 ft
	-1.0 m kg	*2,520	*2,520	*3,610	2,950	*2,790	1,510	*1,900	1,000			*1,340	780	4.8 m
	-3.3 ft lb	*5,570	*5,570	*8,040	6,430	*6,100	3,300	*4,160	2,190			*2,960	1,730	15.8 ft
Boom: 2.9 m / 9'6" Arm: 1.9 m / 6'3" Shoe: Single wheel CWT: 350 kg / 772 lb Machine: Front direction Dozer blade: Up	-2.0 m kg	*4,040	*4,040	*3,130	3,010	*2,040	1,540					*1,200	1,040	4.0 m
	-6.6 ft lb	*8,980	*8,980	*6,820	6,580	*4,450	3,370					*2,650	2,300	13.0 ft
	5.0 m kg											*1,200	1,130	3.9 m
	16.5 ft lb											*2,670	2,540	12.7 ft
	4.0 m kg							*1,350	1,110			*1,030	820	4.8 m
	13.2 ft lb							*2,990	2,430			*2,280	1,810	15.6 ft
	3.0 m kg							*1,470	1,090	1,370	750	*970	690	5.3 m
	9.9 ft lb							*3,230	2,380	3,000	1,650	*2,150	1,520	17.2 ft
	2.0 m kg					*2,300	1,600	*1,720	1,030	1,350	730	*980	630	5.5 m
	6.6 ft lb					*5,010	3,500	*3,770	2,270	2,950	1,600	*2,170	1,390	18.0 ft
	1.0 m kg					*2,890	1,480	1,870	980	1,320	710	*1,040	610	5.5 m
	3.3 ft lb					*6,330	3,240	4,090	2,150	2,890	1,550	*2,300	1,360	18.0 ft
	0.0 m kg	*1,330	*1,330	*2,060	*2,060	2,950	1,420	1,830	940	1,300	690	*1,170	640	5.3 m
	0.0 ft lb	*2,930	*2,930	*4,600	*4,600	6,440	3,100	3,990	2,070	2,850	1,520	*2,580	1,420	17.3 ft
	-1.0 m kg	*2,520	*2,520	*3,610	2,710	*2,790	1,410	1,810	930			*1,340	730	4.8 m
Boom: 2.9 m / 9'6" Arm: 1.9 m / 6'3" Shoe: Single wheel CWT: 350 kg / 772 lb Machine: Rear direction Dozer blade: Down	-3.3 ft lb	*5,570	*5,570	*8,040	5,910	*6,100	3,080	3,970	2,050			*2,960	1,620	15.8 ft
	-2.0 m kg	*4,040	*4,040	*3,130	2,770	*2,040	1,430					*1,200	970	4.0 m
	-6.6 ft lb	*8,980	*8,980	*6,820	6,050	*4,450	3,140					*2,650	2,160	13.0 ft
	5.0 m kg											*1,200	*1,200	3.9 m
	16.5 ft lb											*2,670	*2,670	12.7 ft
	4.0 m kg							*1,350	1,180			*1,030	870	4.8 m
	13.2 ft lb							*2,990	2,580			*2,280	1,930	15.6 ft
	3.0 m kg							*1,470	1,150	*1,380	800	*970	730	5.3 m
	9.9 ft lb							*3,230	2,520	*3,040	1,750	*2,150	1,620	17.2 ft
	2.0 m kg					*2,300	1,710	*1,720	1,100	*1,450	780	*980	670	5.5 m
	6.6 ft lb					*5,010	3,740	*3,770	2,410	*3,200	1,710	*2,170	1,480	18.0 ft
	1.0 m kg					*2,890	1,580	*1,970	1,050	*1,530	750	*1,040	660	5.5 m
	3.3 ft lb					*6,330	3,470	*4,310	2,290	*3,370	1,660	*2,300	1,450	18.0 ft
	0.0 m kg	*1,330	*1,330	*2,060	*2,060	*3,050	1,520	*2,060	1,010	*1,520	740	*1,170	690	5.3 m
	0.0 ft lb	*2,930	*2,930	*4,600	*4,600	*6,680	3,330	*4,520	2,210	*3,320	1,620	*2,580	1,520	17.3 ft
Boom: 2.9 m / 9'6" Arm: 1.9 m / 6'3" Shoe: Single wheel CWT: 350 kg / 772 lb Machine: Rear direction Dozerblade: Up	-1.0 m kg	*2,520	*2,520	*3,610	2,950	*2,790	1,510	*1,900	1,000			*1,340	780	4.8 m
	-3.3 ft lb	*5,570	*5,570	*8,040	6,430	*6,100	3,300	*4,160	2,190			*2,960	1,730	15.8 ft
	-2.0 m kg	*4,040	*4,040	*3,130	3,010	*2,040	1,540					*1,200	1,040	4.0 m
	-6.6 ft lb	*8,980	*8,980	*6,820	6,580	*4,450	3,370					*2,650	2,300	13.0 ft
	5.0 m kg											*1,200	1,130	3.9 m
	16.5 ft lb											*2,670	2,540	12.7 ft
	4.0 m kg							*1,350	1,110			*1,030	820	4.8 m
	13.2 ft lb							*2,990	2,430			*2,280	1,810	15.6 ft
	3.0 m kg							*1,470	1,090	1,370	750	*970	690	5.3 m
	9.9 ft lb							*3,230	2,380	3,000	1,650	*2,150	1,520	17.2 ft
	2.0 m kg					*2,300	1,600	*1,720	1,030	1,350	730	*980	630	5.5 m
	6.6 ft lb					*5,010	3,500	*3,770	2,270	2,950	1,600	*2,170	1,390	18.0 ft
	1.0 m kg					*2,890	1,480	1,870	980	1,320	710	*1,040	610	5.5 m
	3.3 ft lb					*6,330	3,240	4,090	2,150	2,890	1,550	*2,300	1,360	18.0 ft
	0.0 m kg	*1,330	*1,330	*2,060	*2,060	2,950	1,420	1,830	940	1,300	690	*1,170	640	5.3 m
	0.0 ft lb	*2,930	*2,930	*4,600	*4,600	6,440	3,100	3,990	2,070	2,850	1,520	*2,580	1,420	17.3 ft

Notes: 1. The above loads are in compliance with SAE J1097 and ISO 10567 Hydraulic Excavator Lifting Capacity Standards. 2. Rated loads do not exceed 87% of hydraulic lifting capacity or 75% of tipping load. 3. Rated loads marked with an asterisk (*) are limited by hydraulic capacity rather than tipping load.

LIFTING CAPACITY EW60E

Lifting capacity at the arm end without bucket.

For lifting capacity including bucket. Simply subtract actual weight of the direct fit bucket or the bucket with quick coupler from the following values.

	Lifting hook related to ground level	1.0 m / 3.3 ft		2.0 m / 6.6 ft		3.0 m / 9.0 ft		4.0 m / 13.2 ft		5.0 m / 16.5 ft		Max. reach		
		Along UC	Across UC	Along UC	Across UC	Along UC	Across UC	Along UC	Across UC	Along UC	Across UC	Along UC	Across UC	Max.
Boom: 3.24 m / 10'8" Arm: 1.6 m / 5'3" Shoe: Twin wheel CWT: 500 kg / 1,102 lb Machine: Front direction Dozer blade: Down	6.0 m kg											*2,650	*2,650	2.4 m
	19.8 ft lb											*6,120	*6,120	7.6 ft
	5.0 m kg					*2,000	*2,000	*1,770	1,500			*1,560	1,440	4.1 m
	16.5 ft lb					*4,410	*4,410	*3,890	3,270			*3,470	3,220	13.3 ft
	4.0 m kg					*2,040	*2,040	*1,690	1,520			*1,310	1,070	4.9 m
	13.2 ft lb					*4,480	*4,480	*3,720	3,330			*2,890	2,370	16.1 ft
	3.0 m kg					*2,400	2,330	*1,800	1,480	*1,480	1,040	*1,210	910	5.4 m
	9.9 ft lb					*5,240	5,100	*3,950	3,230	*3,250	2,270	*2,670	2,020	17.6 ft
	2.0 m kg					*2,860	2,150	*1,950	1,410	*1,510	1,010	*1,180	840	5.6 m
	6.6 ft lb					*6,260	4,700	*4,280	3,080	*3,300	2,210	*2,620	1,870	18.4 ft
	1.0 m kg					*2,600	2,020	*2,000	1,340	*1,480	980	*1,160	830	5.6 m
	3.3 ft lb					*6,020	4,420	*4,390	2,940	*3,240	2,150	*2,560	1,840	18.4 ft
	0.0 m kg					*2,560	1,990	*1,850	1,310	*1,310	960	*1,020	870	5.4 m
	0.0 ft lb					*5,620	4,350	*4,050	2,870	*2,860	2,120	*2,240	1,930	17.7 ft
	-1.0 m kg			*2,020	*2,020	*1,920	*1,920	*1,440	1,310			*780	*780	4.9 m
	-3.3 ft lb			*4,450	*4,450	*4,210	*4,210	*3,140	2,870			*1,730	*1,730	16.2 ft
	-2.0 m kg					*930	*930	*520	*520			*320	*320	4.2 m
	-6.6 ft lb					*2,010	*2,010	*1,060	*1,060			*690	*690	13.6 ft
Boom: 3.24 m / 10'8" Arm: 1.6 m / 5'3" Shoe: Twin wheel CWT: 500 kg / 1,102 lb Machine: Front direction Dozer blade: Up	6.0 m kg											*2,650	*2,650	2.4 m
	19.8 ft lb											*6,120	*6,120	7.6 ft
	5.0 m kg					*2,000	*2,000	*1,770	1,320			*1,560	1,260	4.1 m
	16.5 ft lb					*4,410	*4,410	*3,890	2,870			*3,470	2,820	13.3 ft
	4.0 m kg					*2,040	*2,040	*1,690	1,340			*1,310	930	4.9 m
	13.2 ft lb					*4,480	*4,480	*3,720	2,930			*2,890	2,070	16.1 ft
	3.0 m kg					*2,400	2,030	*1,800	1,290	*1,480	910	*1,210	800	5.4 m
	9.9 ft lb					*5,240	4,440	*3,950	2,840	*3,250	1,990	*2,670	1,760	17.6 ft
	2.0 m kg					*2,860	1,850	*1,950	1,230	*1,510	880	*1,180	740	5.6 m
	6.6 ft lb					*6,260	4,060	*4,280	2,690	*3,300	1,930	*2,620	1,630	18.4 ft
	1.0 m kg					*2,600	1,730	*2,000	1,160	*1,480	850	*1,160	720	5.6 m
	3.3 ft lb					*6,020	3,790	*4,390	2,550	*3,240	1,870	*2,560	1,600	18.4 ft
	0.0 m kg					*2,560	1,700	*1,850	1,130	*1,310	840	*1,020	760	5.4 m
	0.0 ft lb					*5,620	3,710	*4,050	2,480	*2,860	1,840	*2,240	1,680	17.7 ft
	-1.0 m kg			*2,020	*2,020	*1,920	1,710	*1,440	1,130			*780	*780	4.9 m
	-3.3 ft lb			*4,450	*4,450	*4,210	3,740	*3,140	2,480			*1,730	*1,730	16.2 ft
	-2.0 m kg					*930	*930	*520	*520			*320	*320	4.2 m
	-6.6 ft lb					*2,010	*2,010	*1,060	*1,060			*690	*690	13.6 ft

Notes: 1. The above loads are in compliance with SAE J1097 and ISO 10567 Hydraulic Excavator Lifting Capacity Standards. 2. Rated loads do not exceed 87% of hydraulic lifting capacity or 75% of tipping load. 3. Rated loads marked with an asterisk (*) are limited by hydraulic capacity rather than tipping load.

Specifications

LIFTING CAPACITY EW60E

Lifting capacity at the arm end without bucket.

For lifting capacity including bucket. Simply subtract actual weight of the direct fit bucket or the bucket with quick coupler from the following values.

	Lifting hook related to ground level	1.0 m / 3.3 ft		2.0 m / 6.6 ft		3.0 m / 9.0 ft		4.0 m / 13.2 ft		5.0 m / 16.5 ft		Max. reach		
		Along UC	Across UC	Along UC	Across UC	Along UC	Across UC	Along UC	Across UC	Along UC	Across UC	Along UC	Across UC	Max.
Boom: 3.24 m / 10'8" Arm: 1.6 m / 5'3" Shoe: Twin wheel CWT: 500 kg / 1,102 lb Machine: Rear direction Dozer blade: Down	6.0 m kg											*2,650	*2,650	2.4 m
	19.8 ft lb											*6,120	*6,120	7.6 ft
	5.0 m kg					*2,000	*2,000	*1,770	1,510			*1,560	1,450	4.1 m
	16.5 ft lb					*4,410	*4,410	*3,890	3,290			*3,470	3,240	13.3 ft
	4.0 m kg					*2,040	*2,040	*1,690	1,530			*1,310	1,070	4.9 m
	13.2 ft lb					*4,480	*4,480	*3,720	3,350			*2,890	2,380	16.1 ft
	3.0 m kg					*2,400	2,340	*1,800	1,480	*1,480	1,040	*1,210	920	5.4 m
	9.9 ft lb					*5,240	5,130	*3,950	3,250	*3,250	2,280	*2,670	2,030	17.6 ft
	2.0 m kg					*2,860	2,160	*1,950	1,410	*1,510	1,020	*1,180	850	5.6 m
	6.6 ft lb					*6,260	4,730	*4,280	3,100	*3,300	2,220	*2,620	1,880	18.4 ft
	1.0 m kg					*2,600	2,030	*2,000	1,350	*1,480	990	*1,160	840	5.6 m
	3.3 ft lb					*6,020	4,450	*4,390	2,960	*3,240	2,160	*2,560	1,850	18.4 ft
	0.0 m kg					*2,560	2,000	*1,850	1,320	*1,310	970	*1,020	880	5.4 m
	0.0 ft lb					*5,620	4,370	*4,050	2,890	*2,860	2,130	*2,240	1,940	17.7 ft
	-1.0 m kg			*2,020	*2,020	*1,920	1,920	*1,440	1,320			*780	*780	4.9 m
	-3.3 ft lb			*4,450	*4,450	*4,210	*4,210	*3,140	2,890			*1,730	*1,730	16.2 ft
Boom: 3.24 m / 10'8" Arm: 1.6 m / 5'3" Shoe: Twin wheel CWT: 500 kg / 1,102 lb Machine: Rear direction Dozer blade: Up	-2.0 m kg					*930	*930	*520	*520			*320	*320	4.2 m
	-6.6 ft lb					*2,010	*2,010	*1,060	*1,060			*690	*690	13.6 ft
	6.0 m kg											*2,650	*2,650	2.4 m
	19.8 ft lb											*6,120	*6,120	7.6 ft
	5.0 m kg					*2,000	*2,000	*1,770	1,320			*1,560	1,260	4.1 m
	16.5 ft lb					*4,410	*4,410	*3,890	2,870			*3,470	2,820	13.3 ft
	4.0 m kg					*2,040	*2,040	*1,690	1,340			*1,310	930	4.9 m
	13.2 ft lb					*4,480	*4,480	*3,720	2,930			*2,890	2,070	16.1 ft
	3.0 m kg					*2,400	2,030	*1,800	1,290	*1,480	910	*1,210	800	5.4 m
	9.9 ft lb					*5,240	4,440	*3,950	2,840	*3,250	1,990	*2,670	1,760	17.6 ft
	2.0 m kg					*2,860	1,850	*1,950	1,230	*1,510	880	*1,180	740	5.6 m
	6.6 ft lb					*6,260	4,060	*4,280	2,690	*3,300	1,930	*2,620	1,630	18.4 ft
	1.0 m kg					*2,600	1,730	*2,000	1,160	*1,480	850	*1,160	720	5.6 m
	3.3 ft lb					*6,020	3,790	*4,390	2,550	*3,240	1,870	*2,560	1,600	18.4 ft
	0.0 m kg					*2,560	1,700	*1,850	1,130	*1,310	840	*1,020	760	5.4 m
	0.0 ft lb					*5,620	3,710	*4,050	2,480	*2,860	1,840	*2,240	1,680	17.7 ft
Boom: 3.24 m / 10'8" Arm: 1.9 m / 6'3" Shoe: Twin wheel CWT: 500 kg / 1,102 lb Machine: Front direction Dozer blade: Down	-1.0 m kg			*2,020	*2,020	*1,920	1,710	*1,440	1,130			*780	*780	4.9 m
	-3.3 ft lb			*4,450	*4,450	*4,210	3,740	*3,140	2,480			*1,730	*1,730	16.2 ft
	-2.0 m kg					*930	*930	*520	*520			*320	*320	4.2 m
	-6.6 ft lb					*2,010	*2,010	*1,060	*1,060			*690	*690	13.6 ft
	6.0 m kg					*2,170	*2,170					*1,780	*1,780	3.2 m
	19.8 ft lb					*4,630	*4,630					*4,010	*4,010	10.2 ft
	5.0 m kg							*1,600	1,540			*1,240	1,230	4.5 m
	16.5 ft lb							*3,550	3,360			*2,740	*2,740	14.7 ft
	4.0 m kg							*1,580	1,540	*1,410	1,050	*1,060	950	5.3 m
	13.2 ft lb							*3,480	3,360	*3,100	2,300	*2,350	2,120	17.2 ft
	3.0 m kg					*2,010	*2,010	*1,710	1,490	*1,420	1,040	*990	830	5.7 m
	9.9 ft lb					*4,410	*4,410	*3,740	3,260	*3,120	2,280	*2,190	1,830	18.7 ft
	2.0 m kg					*2,720	2,180	*1,880	1,410	*1,470	1,010	*980	770	5.9 m
	6.6 ft lb					*5,930	4,770	*4,130	3,090	*3,230	2,210	*2,150	1,710	19.3 ft
	1.0 m kg					*2,940	2,020	*1,980	1,340	*1,480	970	*1,000	760	5.9 m
	3.3 ft lb					*6,440	4,430	*4,340	2,930	*3,240	2,130	*2,200	1,680	19.4 ft
	0.0 m kg					*2,700	1,960	*1,890	1,290	*1,370	950	*950	790	5.7 m
	0.0 ft lb					*5,930	4,290	*4,150	2,830	*3,000	2,080	*2,110	1,760	18.7 ft
	-1.0 m kg			*2,320	*2,320	*2,150	1,960	*1,570	1,280	*1,040	950	*770	*770	5.3 m
	-3.3 ft lb			*5,170	*5,170	*4,710	4,290	*3,430	2,810	*2,240	2,080	*1,690	*1,690	17.3 ft
	-2.0 m kg			*1,290	*1,290	*1,270	*1,270	*890	*890			*420	*420	4.6 m
	-6.6 ft lb			*2,820	*2,820	*2,760	*2,760	*1,910	*1,910			*910	*910	14.9 ft

Notes: 1. The above loads are in compliance with SAE J1097 and ISO 10567 Hydraulic Excavator Lifting Capacity Standards. 2. Rated loads do not exceed 87% of hydraulic lifting capacity or 75% of tipping load. 3. Rated loads marked with an asterisk (*) are limited by hydraulic capacity rather than tipping load.

LIFTING CAPACITY EW60E

Lifting capacity at the arm end without bucket.

For lifting capacity including bucket. Simply subtract actual weight of the direct fit bucket or the bucket with quick coupler from the following values.

	Lifting hook related to ground level	1.0 m / 3.3 ft		2.0 m / 6.6 ft		3.0 m / 9.0 ft		4.0 m / 13.2 ft		5.0 m / 16.5 ft		Max. reach		
		Along UC	Across UC	Along UC	Across UC	Along UC	Across UC	Along UC	Across UC	Along UC	Across UC	Along UC	Across UC	Max.
Boom: 3.24 m / 10'8" Arm: 1.9 m / 6'3" Shoe: Twin wheel CWT: 500 kg / 1,102 lb Machine: Front direction Dozer blade: Up	6.0 m kg					*2,170	2,100					*1,780	*1,780	3.2 m
	19.8 ft lb					*4,630	4,570					*4,010	*4,010	10.2 ft
	5.0 m kg							*1,600	1,350			*1,240	1,080	4.5 m
	16.5 ft lb							*3,550	2,950			*2,740	2,410	14.7 ft
	4.0 m kg							*1,580	1,350	*1,410	920	*1,060	830	5.3 m
	13.2 ft lb							*3,480	2,960	*3,100	2,020	*2,350	1,850	17.2 ft
	3.0 m kg					*2,010	*2,010	*1,710	1,300	*1,420	910	*990	720	5.7 m
	9.9 ft lb					*4,410	*4,410	*3,740	2,860	*3,120	1,990	*2,190	1,600	18.7 ft
	2.0 m kg					*2,720	1,880	*1,880	1,230	*1,470	880	*980	670	5.9 m
	6.6 ft lb					*5,930	4,120	*4,130	2,700	*3,230	1,920	*2,150	1,480	19.3 ft
	1.0 m kg					*2,940	1,730	*1,980	1,160	*1,480	840	*1,000	660	5.9 m
	3.3 ft lb					*6,440	3,790	*4,340	2,540	*3,240	1,850	*2,200	1,460	19.4 ft
	0.0 m kg					*2,700	1,670	*1,890	1,120	*1,370	820	*950	690	5.7 m
	0.0 ft lb					*5,930	3,660	*4,150	2,450	*3,000	1,800	*2,110	1,520	18.7 ft
	-1.0 m kg			*2,320	*2,320	*2,150	1,670	*1,570	1,110	*1,040	820	*770	*770	5.3 m
	-3.3 ft lb			*5,170	*5,170	*4,710	3,660	*3,430	2,420	*2,240	1,800	*1,690	*1,690	17.3 ft
	-2.0 m kg			*1,290	*1,290	*1,270	*1,270	*890	*890			*420	*420	4.6 m
	-6.6 ft lb			*2,820	*2,820	*2,760	*2,760	*1,910	*1,910			*910	*910	14.9 ft
Boom: 3.24 m / 10'8" Arm: 1.9 m / 6'3" Shoe: Twin wheel CWT: 500 kg / 1,102 lb Machine: Rear direction Dozer blade: Down	6.0 m kg					*2,170	*2,170					*1,780	*1,780	3.2 m
	19.8 ft lb					*4,630	*4,630					*4,010	*4,010	10.2 ft
	5.0 m kg							*1,600	1,540			*1,240	1,240	4.5 m
	16.5 ft lb							*3,550	3,370			*2,740	*2,740	14.7 ft
	4.0 m kg							*1,580	1,550	*1,410	1,060	*1,060	960	5.3 m
	13.2 ft lb							*3,480	3,380	*3,100	2,310	*2,350	2,130	17.2 ft
	3.0 m kg					*2,010	*2,010	*1,710	1,500	*1,420	1,050	*990	830	5.7 m
	9.9 ft lb					*4,410	*4,410	*3,740	3,280	*3,120	2,290	*2,190	1,850	18.7 ft
	2.0 m kg					*2,720	2,190	*1,880	1,420	*1,470	1,010	*980	780	5.9 m
	6.6 ft lb					*5,930	4,800	*4,130	3,110	*3,230	2,220	*2,150	1,720	19.3 ft
	1.0 m kg					*2,940	2,030	*1,980	1,350	*1,480	980	*1,000	770	5.9 m
	3.3 ft lb					*6,440	4,450	*4,340	2,950	*3,240	2,140	*2,200	1,690	19.4 ft
	0.0 m kg					*2,700	1,970	*1,890	1,300	*1,370	950	*950	800	5.7 m
	0.0 ft lb					*5,930	4,320	*4,150	2,850	*3,000	2,090	*2,110	1,770	18.7 ft
	-1.0 m kg			*2,320	*2,320	*2,150	1,970	*1,570	1,290	*1,040	950	*770	*770	5.3 m
	-3.3 ft lb			*5,170	*5,170	*4,710	4,310	*3,430	2,830	*2,240	2,090	*1,690	*1,690	17.3 ft
	-2.0 m kg			*1,290	*1,290	*1,270	*1,270	*890	*890			*420	*420	4.6 m
	-6.6 ft lb			*2,820	*2,820	*2,760	*2,760	*1,910	*1,910			*910	*910	14.9 ft
Boom: 3.24 m / 10'8" Arm: 1.9 m / 6'3" Shoe: Twin wheel CWT: 500 kg / 1,102 lb Machine: Rear direction Dozer blade: Up	6.0 m kg					*2,170	2,100					*1,780	*1,780	3.2 m
	19.8 ft lb					*4,630	4,570					*4,010	*4,010	10.2 ft
	5.0 m kg							*1,600	1,350			*1,240	1,080	4.5 m
	16.5 ft lb							*3,550	2,950			*2,740	2,410	14.7 ft
	4.0 m kg							*1,580	1,350	*1,410	920	*1,060	830	5.3 m
	13.2 ft lb							*3,480	2,960	*3,100	2,020	*2,350	1,850	17.2 ft
	3.0 m kg					*2,010	*2,010	*1,710	1,300	*1,420	910	*990	720	5.7 m
	9.9 ft lb					*4,410	*4,410	*3,740	2,860	*3,120	1,990	*2,190	1,600	18.7 ft
	2.0 m kg					*2,720	1,880	*1,880	1,230	*1,470	880	*980	670	5.9 m
	6.6 ft lb					*5,930	4,120	*4,130	2,700	*3,230	1,920	*2,150	1,480	19.3 ft
	1.0 m kg					*2,940	1,730	*1,980	1,160	*1,480	840	*1,000	660	5.9 m
	3.3 ft lb					*6,440	3,790	*4,340	2,540	*3,240	1,850	*2,200	1,460	19.4 ft
	0.0 m kg					*2,700	1,670	*1,890	1,120	*1,370	820	*950	690	5.7 m
	0.0 ft lb					*5,930	3,660	*4,150	2,450	*3,000	1,800	*2,110	1,520	18.7 ft
	-1.0 m kg			*2,320	*2,320	*2,150	1,670	*1,570	1,110	*1,040	820	*770	*770	5.3 m
	-3.3 ft lb			*5,170	*5,170	*4,710	3,660	*3,430	2,420	*2,240	1,800	*1,690	*1,690	17.3 ft
	-2.0 m kg			*1,290	*1,290	*1,270	*1,270	*890	*890			*420	*420	4.6 m
	-6.6 ft lb			*2,820	*2,820	*2,760	*2,760	*1,910	*1,910			*910	*910	14.9 ft

Notes: 1. The above loads are in compliance with SAE J1097 and ISO 10567 Hydraulic Excavator Lifting Capacity Standards. 2. Rated loads do not exceed 87% of hydraulic lifting capacity or 75% of tipping load. 3. Rated loads marked with an asterisk (*) are limited by hydraulic capacity rather than tipping load.

Equipment

STANDARD EQUIPMENT
Engine
Low-emission Volvo T4f diesel engine
Standard cooling system
Two-stage air filter
Fuel filter and water separator
Alternator, 90 A
Electric / Electronic control system
Safe engine start function
Automatic idling system
Engine auto shut down
Halogen working lights;
Cab-mounted 1 (Front), Boom-mounted 1(LH)
Battery, 12 V / 100 Ah
Start motor, 12 V / 2.5 kW
Monitor and keypad
Master electrical disconnect switch
Electric dozer blade switch on joystick
Pattern change valve
Travel alarm
Frame
Rearview mirror
Heavy counterweight
Under cover
Fender
Dozer blade
Undercarriage
Single wheels: 12.00-16.5 12PR
Hydraulic system
Automatic two speed travel motors
Cylinder cushioning
Hydraulic fluid mineral 46
Travel motor 30km/h (18.6mi/h)
Cab and interior
Cab
Fabric operator seat with suspension
Seat belt, 3 inch retractable
Climate control with Air conditioning
Control joystick
Master key
Mechanical hour meter
Digging equipment
Boom: 2.9m (9'6"), Arm: 1.6m (5'3")
Offset boom
Linkage
Service
Tool kit-daily maintenance

OPTIONAL EQUIPMENT
Engine
Water separator (With heater)
Electric / Electronic control system
Fuel filler pump: 35 l/min (9.3gal/min), with automatic shut-off
Halogen extra working lights;
Cab-mounted 1 (Rear)
Boom-mounted 1(RH)
Caretrack
Rotating warning beacon
Rearview Camera
Green light beacon
Frame
Standard counterweight
Wide fender
Wide dozer blade
Undercarriage
Twin wheels: 7.50-15.0 14PR
Hydraulic system
Hydraulic piping:
Breaker & shear (X1 Double Acting)
- Max. Flow: 60 l/min (16 gpm)
- Max. Pressure: 22.5 Mpa (3,270 psi)
Slope & rotator (X3)
- Max. Flow: 22 l/min (6 gpm)
- Max. Pressure: 14.7 Mpa (2,130 psi)
Thumb (with three way valve)
Grapple
Quick coupler
Hose rupture valve for boom, arm
Overload warning device
Hydraulic oil, ISO VG 32, 68
Hydraulic oil, biodegradable 46
Hydraulic oil, longlife oil 32, 46, 68
Cab and interior
Fabric operator seat with suspension with heater
PVC operator seat with suspension
Seat belt, 2 inch retractable
Radio with MP3/AUX/Bluetooth
Cab mounted FOG (Falling Object Guard)
FOPS (Falling Object Protection Structure)
Sun visor
Digging equipment
Fixed boom
2pcs boom: 3.24 m (10'8")
Long arm: 1.9 m (6'3")
Service
Tool kit, full scale

SELECTION OF VOLVO OPTIONAL EQUIPMENT

Electric dozer blade switch on joystick



Rear view camera



Two-piece boom



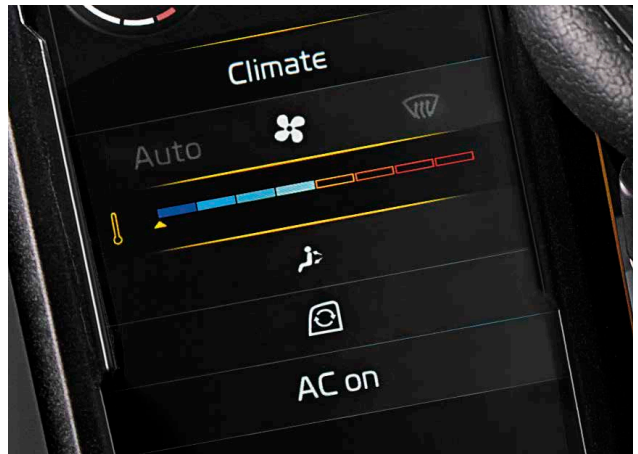
LED Light



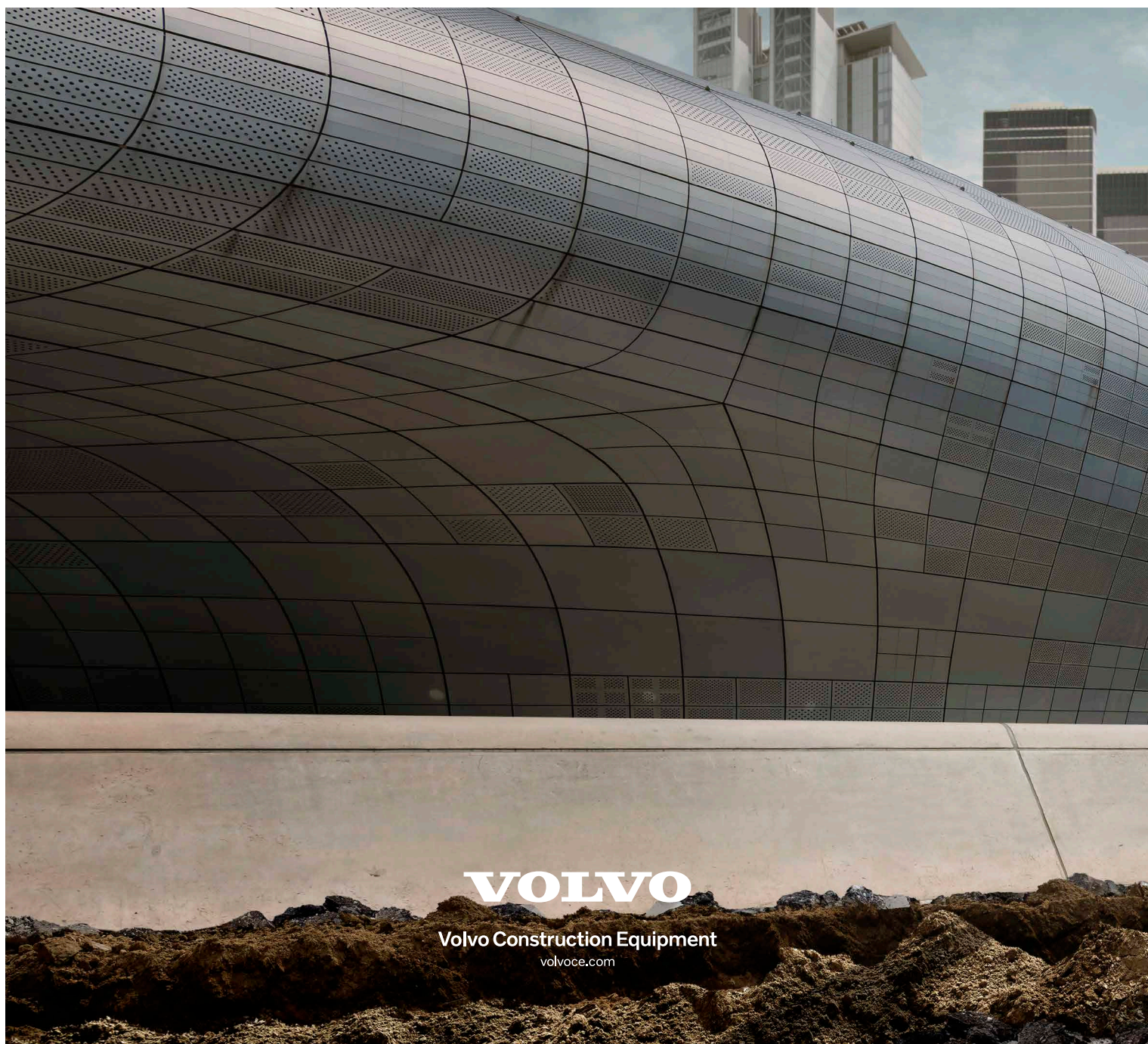
Twin tires



Auto Air Conditioning



Not all products are available in all markets. Under our policy of continuous improvement, we reserve the right to change specifications and design without prior notice. The illustrations do not necessarily show the standard version of the machine.



VOLVO

Volvo Construction Equipment

volvoce.com