

Volvo Construction Equipment  
Building Tomorrow



# WHEEL LOADERS IN AGRICULTURE

L45H, L50H, L60H, L70H, L90H, L110H, L120H





# The perfect package

Work on the farm never stops, so you need a machine that delivers non-stop performance too. Working day or night, indoors or outdoors, the Volvo agriculture wheel loader will fit seamlessly into your operation, carrying a variety of loads across some of the most challenging ground conditions.

By utilizing our decades of experience working with farmers we have tailored a wheel loader package which boosts productivity in agriculture applications – including landscaping, irrigation, livestock and crop production. Agile, versatile and reliable, the agriculture machine is the perfect partner.

## L45H, L50H



**Automatically reversible  
cooling fan**

**Hand inch valve**

**Engine air  
pre-cleaner**

**Foldable A/C condenser:  
easy access to main cooler**

**Excellent  
traction**

**Powerful and  
fuel-efficient  
Volvo engine**

**Compact design**

**Long boom**



# L60H, L70H, L90H, L110H, L120H

Easy to operate  
and maneuverable

Engine air  
pre-cleaner

Compact design

Powerful and fuel-  
efficient Volvo engine

Slidable cooling  
unit

Automatically reversible  
cooling fan

Axle oil cooler  
(L70H-L120H)

Lock-up torque  
converter

Agri Powershift  
(Optional L70H-L120H)



**Customizable  
settings**

**Electro Servo  
(L70H, L120H)**

**Adjustable flow for third  
hydraulic function**

**Third hydraulic  
function (Optional)**

**Optimized dump height**

**Torque Parallel-  
linkage**

**Long boom  
(Optional)**

**Attachment bracket**

**Boom Suspension  
System**

**Excellent traction  
(RimPull control standard)**



# Configured for success

Benefit from all the features and functions found on a standard Volvo Wheel Loader, combined with the specialist equipment needed to succeed in agriculture and landscaping applications. In addition to the agriculture package, there are a number of other options we can offer which are beneficial in this application.

- Included in the Agriculture package
- \* Included in standard machine configuration
- o Optional equipment

	VOLVO WHEEL LOADERS IN AGRICULTURE (WL10516)						
	L45H	L50H	L60H	L70H	L90H	L110H	L120H
Attachment bracket	•	•	•	•	•	•	•
Separate attachment locking			•	•	•	•	•
Third hydraulic function	•	•	o	o	o	o	o
Axle oil cooler				•	•	•	•
Boom Suspension System (BSS)	•	•	•	•	•	•	•
Long boom	•	•	o	o	o	o	o
Reversible fan	•	•	•	•	•	•	•
Hand inch valve	•	•					
Agriculture tires Contact your Volvo dealer for information on available tires	o	o	o	o	o	o	o
Agriculture mudguards	o	o	o	o	o	o	o
Extended fenders	o	o					
Front mudflaps	o	o					
Fourth hydraulic function	o	o	o	o	o	o	o
Single lever	o	o	o	o	o	o	o
High flow function	o	o					
Extra oil return line via filter	o	o					
Comfort Drive Control (CDC)	o	o	o	o	o	o	o
LED work lights packages Contact your Volvo dealer for more information	o	o	o	o	o	o	o
Central lubrication	o	o	o	o	o	o	o
Hose Rupture Valve	o	o					
High cooling capacity	o	o					
Electric Servo				•	•	•	•
Adjustable flow for third hydraulic function	•	•	o	•	•	•	•
Hand throttle control	o	o	o	o	o	o	o
Engine air pre-cleaner, turbo II type	o	o	o	o	o	o	o
Engine air pre-cleaner, cyclone			•	•	•	•	•
Biodegradable Volvo Hydraulic fluid	o	o	o	o	o	o	o
Towing hitch			o	o	o	o	o
Trailer socket	o	o					
Sweeper preparation	o	o					
Engine auto shutdown	o	o	o	o	o	o	o
Delayed engine shutdown			o	o	o	o	o
Air-suspended seat with heating	o	o	o	o	o	o	o
Slow moving vehicle sign	o	o	o	o	o	o	o
Lock-up				•	•	•	•
OptiShift						•	•
Cab air pre-cleaner, cyclone type			o	o	o	o	o
Carbon filter for foul smelling environments			o	o	o	o	o

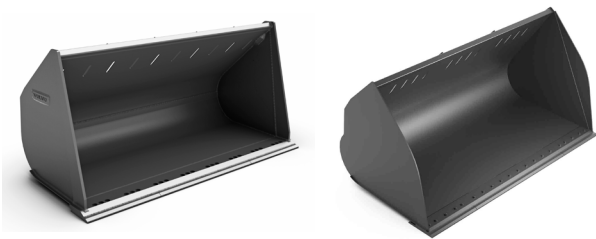


# Multi-tasking made easy

Unlock the full versatility of your machine with the Volvo attachment bracket, facilitating fast attachment changes and enabling machine compatibility with an extensive range of attachments. With the Volvo attachment range you can count on maximum productivity, fuel efficiency and uptime.

More information can be found in the Attachments brochure, or in the Attachments selector tool, available for IOS on App store, for Android on Play Store and China Android Store.

**Light Material buckets**



**High-Tip buckets**



**General Purpose bucket**



**Clamp bucket**



**Grading bucket**



**Stone bucket**



**Forks**



**Material Handling Arm**



**Attachment bracket**

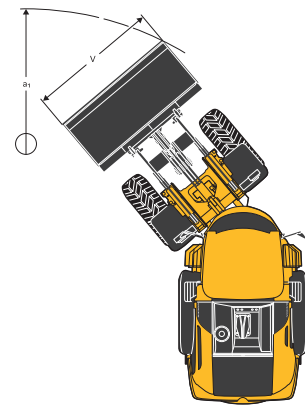
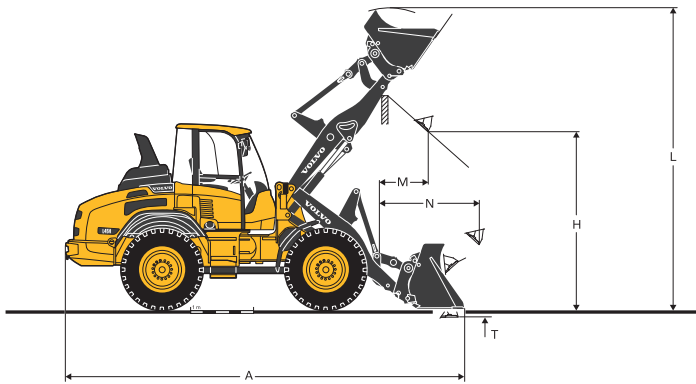


## The right tool for the job

Take on even more agriculture tasks such as feeding, cleaning, bale handling and silage collection. Your Volvo dealer will work with you to recommend, source and supply the best attachment for your operation.

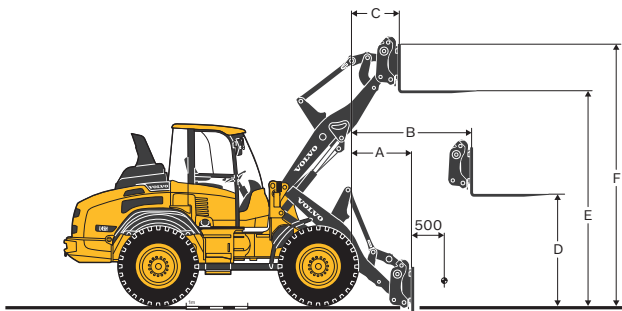
Get in touch to find out more.

# Specifications



Light material bucket		L45H		L50H	
Capacity heaped	m <sup>3</sup> /yd <sup>3</sup>	2	2.62	2	2.62
Material density	kg/m <sup>3</sup> ton/yd <sup>3</sup>	1,200	0.9	1,300	0.98
Static tipping load, straight (ISO 14397)	kg/lb	5,600	12,346	6,290	13,867
Static tipping load, Full turn 40° (ISO 14397)	mm/ft in	4,960	16'3"	5,570	18'3"
Hydraulic lifting capacity	kN/lbf	66	14,837	83	18,569
Brakout force	kN/lbf	56	12,589	58	13,039
A Total length	mm/ft in	6,615	21'8"	6,690	21'11"
L Lift height, max.	mm/ft in	4,940	16'2"	5,235	17'2"
V Bucket width	mm/ft in	2,250	7'5"	2,250	7'5"
a <sub>1</sub> Clearance circle	mm/ft in	10,460	34'4"	10,505	34'6"
T Digging depth	mm/ft in	85	0'3"	95	0'4"
H Dump height	mm/ft in	2,610	8'7"	2,695	8'10"
M Reach at max. height	mm/ft in	1,115	3'8"	1,115	3'8"
N Reach, Max.	mm/ft in	1,935	6'4"	1,970	6'6"
Operating weight without load	kg/lb	8,830	19,466	9,520	20,988

With tire Michelin 500/70 R24 XMCL

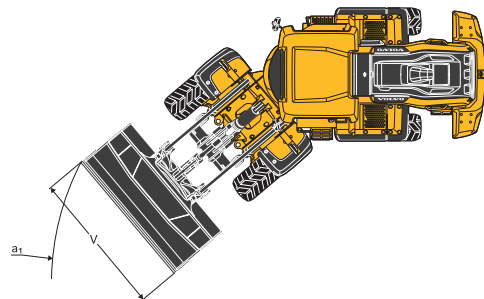
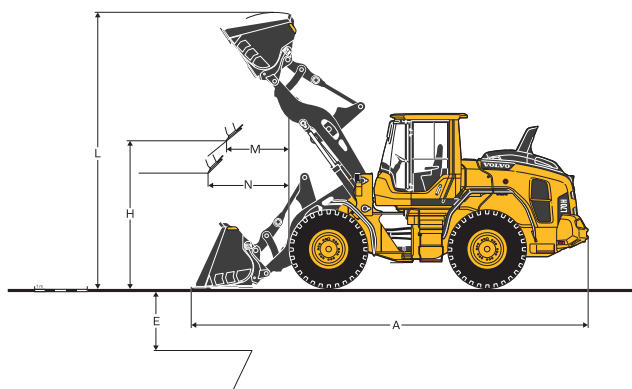


		L45H		L50H	
Fork frame sales code		CL2805036		CL2805036	
Fork tines sales code		CL11392154		CL11392154	
40° deg. turn (ISO 14397)	kg/lb	4,420	9,744	4,810	10,604
Tipping load acc. EN 474-3, 60/80%	kg/lb	2,650 / 3,530	5,842 / 7,782	2,880 / 3,840	6,349 / 8,465
Tipping load 80%, Transport position, full turn 40°	kg/lb	4,000	8,818	4,000	8,818
A	mm/ft in	785	2'7"	800	2'7"
B	mm/ft in	1,475	4'10"	1,505	4'11"
C	mm/ft in	650	2'2"	655	2'2"
D	mm/ft in	1,705	5'7"	1,745	5'9"
E	mm/ft in	3,490	11'5"	4,320	14'2"
F	mm/ft in	4,225	13'10"	4,810	15'9"
Operating weight without load	kg/lb	8,637	19,041	9,340	20,590

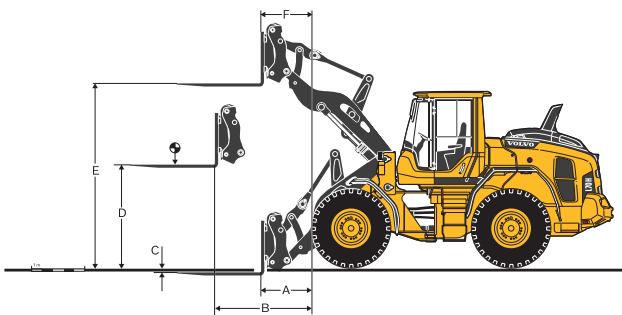
Load Center 1.64 ft

With tire Michelin 500/70 R24 XMCL





Attachment			L60H 92564				L70H 80562				L90H 92687				L110H 92689				L120H 92689			
			3.1 m³/4.1 yd³		3.1 m³/4.1 yd³		3.4 m³/4.4 yd³		3.4 m³/4.4 yd³		4.1 m³/5.4 yd³		4.1 m³/5.4 yd³		5.5 m³/7.2 yd³		5.5 m³/7.2 yd³		5.5 m³/7.2 yd³		5.5 m³/7.2 yd³	
			LM H MegaXBib 620/75 R26		LM H MegaXBib 750/65 R26		LM H MegaXBib 620/75 R26		LM H MegaXBib 750/65 R26		LM H MegaXBib 620/75 R26		LM H MegaXBib 750/65 R26		LM H CEREXBIB 750/65R26		LM H CEREXBIB 750/65R26		LM H CEREXBIB 750/65R26		LM H CEREXBIB 750/65R26	
	Volume heaped ISO/SAE	m³/yd³	3.1	4.1	3.1	4.1	3.4	4.4	3.4	4.4	4.1	5.4	4.1	5.4	5.5	7.2	5.5	7.2	5.5	7.2	5.5	7.2
	Volume at 110% fill factor	m³/yd³	3.4	4.5	3.4	4.5	3.7	4.9	3.7	4.9	4.5	5.9	4.5	5.9	6.1	7.9	6.1	7.9	6.1	7.9	6.1	7.9
	Static tipping load, straight machine (SAE)	kg/lb	8,000	17,630	8,180	18,040	8,740	19,260	9,000	19,850	10,490	23,130	10,600	23,360	11,640	25,670	12,730	28,070	12,730	28,070	12,730	28,070
	Static tipping load at 35deg. turn (SAE)	kg/lb	7,120	15,710	7,290	16,080	7,760	17,110	8,020	17,680	9,250	20,400	9,330	20,570	10,250	22,600	11,180	24,660	11,180	24,660	11,180	24,660
	Static tipping load at full turn (SAE)	kg/lb	6,870	15,140	7,030	15,500	7,470	16,470	7,730	17,040	8,890	19,590	8,960	19,750	9,840	21,690	10,730	23,650	10,730	23,650	10,730	23,650
	Breakout force at ground level (Att.Edge-100)	kN/lbf	60.9	13,690	60.7	13,660	71.2	16,010	70.8	15,920	99.6	22,390	99.7	22,430	115	25,860	121.4	27,290	121.4	27,290	121.4	27,290
A	Overall length	mm/ft in	7,630	25' 0"	7,620	25' 0"	7,740	25' 5"	7,710	25' 4"	7,990	26' 3"	8,000	26' 3"	8,580	28' 2"	8,680	28' 6"	8,680	28' 6"	8,680	28' 6"
E	Digging depth, max dump (S)	mm/ft in	1,420	4' 8"	1,410	4' 8"	1,430	4' 8"	1,400	4' 7"	1,540	5' 0"	1,540	5' 1"	1,700	5' 7"	1,720	5' 8"	1,720	5' 8"	1,720	5' 8"
H	Dump clearance	mm/ft in	2,660	8' 9"	2,670	8' 9"	2,570	8' 5"	2,620	8' 7"	2,670	8' 9"	2,650	8' 8"	2,420	7' 11"	2,490	8' 2"	2,490	8' 2"	2,490	8' 2"
L	Overall operating height	mm/ft in	5,340	17' 6"	5,350	17' 7"	5,490	18' 0"	5,520	18' 1"	5,700	18' 8"	5,690	18' 8"	5,840	19' 2"	5,910	19' 5"	5,910	19' 5"	5,910	19' 5"
M	Dump reach	mm/ft in	1,290	4' 3"	1,280	4' 3"	1,280	4' 2"	1,300	4' 3"	1,290	4' 3"	1,270	4' 2"	1,520	5' 0"	1,550	5' 1"	1,550	5' 1"	1,550	5' 1"
N	Reach at 45deg discharge, Pos. G	mm/ft in	1,610	5' 3"	1,610	5' 3"	1,650	5' 5"	1,660	5' 5"	1,700	5' 7"	1,690	5' 6"	1,800	5' 11"	1,890	6' 2"	1,890	6' 2"	1,890	6' 2"
V	Bucket width	mm/ in	2,550	100"	2,550	100"	2,650	104"	2,650	104"	2,750	108"	2,750	108"	3,000	118"	3,000	118"	3,000	118"	3,000	118"
a <sub>1</sub>	Outer clearance circle (diameter)	mm/ft in	11,990	39' 4"	11,990	39' 4"	12,130	39' 9"	12,120	39' 9"	12,490	41' 0"	12,480	41' 0"	13,250	43' 6"	13,330	43' 9"	13,330	43' 9"	13,330	43' 9"
	Operating weight without load	kg/lb	11,960	26,370	12,230	26,980	13,720	30,240	13,990	30,850	15,370	33,890	15,650	34,500	18,670	41,160	19,410	42,790	19,410	42,790	19,410	42,790



			L60H		L70H		L90H		L110H		L120H	
Fork frame sales code			83768		83768		83770		83770		83770	
Fork tines sales code (R/L)			80042/80043		80042/80043		80106/80107		80106/80107		80106/80107	
Static tipping load, straight	kg/lb		5,243	11,559	5,759	12,696	6,874	15,155	8,002	17,641	8,753	19,297
35° Turn	kg/lb		4,703	10,368	5,165	11,387	6,116	13,483	7,123	15,704	7,776	17,143
at full turn	kg/lb		4,543	10,016	4,989	10,999	5,892	13,188	6,861	15,125	7,486	16,504
at load center distance*	mm/ft in		600	2' 0"	600	2' 0"	600	2' 0"	600	2' 0"	600	2' 0"
A	mm/ft in		737	2' 5"	780	30.7	871	34.3	861	2' 10"	958	3' 2"
B	mm/ft in		1,506	4' 11"	1,555	5' 1"	1,618	5' 4"	1,641	5' 5"	1,716	5' 8"
C	mm/ft in		-81	-1' 10"	-90	-1' 8"	-61	-1' 9"	-39	-1' 10"	1	-1' 12"
D	mm/ft in		1,874	6' 2"	1,898	6' 3"	1,857	6' 1"	1,897	6' 3"	1,866	6' 1"
E	mm/ft in		3,755	12' 4"	3,775	12' 5"	3,897	12' 9"	3,841	12' 7"	3,875	12' 9"
F	mm/ft in		639	2' 1"	706	2' 4"	580	1' 11"	768	2' 6"	807	2' 8"
Operating weight without load	kg/lb		11,471	25,289	13,039	28,746	14,446	31,848	17,228	37,981	17,968	39,613

\* Firm and level ground

Tires L60H, L70H, L70H: Michelin MEGAXBIB 620/75R26

Tires L110H, L120H: Michelin CEREXBIB 750/65R26



# More than machines

Engineering machines which deliver outstanding results is just the start of how we can support your operation. As your partner we are here to help with every aspect of your Volvo machinery: how you use it, maintain it, pay for it and even how you sell it. Our portfolio of services is designed to complement your machine's performance and boost your profitability.

## **24-hours parts delivery guarantee**

Maintain productivity and machine uptime with our range of readily available parts, all backed by Volvo warranty – with 24-hour parts delivery guarantee. Only by using Genuine Volvo Parts, can you protect your investment, extend machine life and guarantee long lasting performance.

## **ActiveCare Direct**

Maximize machine uptime and reduce repair costs with ActiveCare Direct. Utilizing CareTrack data, the intelligent service provides round the clock machine monitoring, as well as customer reports – to help take predictive and preventative maintenance actions.





#### **Maintenance and repair agreements**

Stay on track with planned servicing and keep your asset covered with our range of flexible maintenance and repair options.

#### **Financial Services**

Volvo knows business finance – and our team of experts are dedicated to helping you succeed. With flexible financial and insurance solutions, we can help grow and protect your business. From a single unit to an entire fleet, new or used, we'll customize a solution to meet your needs.

#### **Lifetime Frame and Structure Warranty**

Quality has long been a hallmark of the Volvo brand. Decades of experience, both in the field and in the laboratory, are today delivering unsurpassed frame and structure durability. We believe in the quality of our products – so much so that Volvo machines come with a Lifetime Frame and Structure Warranty, covering the frame, articulation joint and arm.





**VOLVO**

Volvo Construction Equipment  
[volvoce.com](http://volvoce.com)