

Volvo Construction Equipment
Building Tomorrow



WHEEL LOADERS IN BLOCK HANDLING

L150H, L180H, L220H, L350H



The perfect package

Built on decades of experience providing solutions to quarry, mining and aggregate industries, we present the Wheel Loader block handling application package.

Equipped to handle the rigors of lifting and carrying heavyweight blocks all day, and wet, steep and rocky ground, these machines are equipped to deliver maximum performance in tough conditions. These heavy-duty Volvo Wheel Loaders have been configured for optimum results in block handling applications; all day, every day.

L350H block handler

Standard-duty or heavy-duty version

Z-bar lifting arm with double sealing on each pin (Lifetime Warranty on the boom)

Increased hydraulic pressure for extra lifting capacity – heavy-duty version

Larger lift cylinders

Excellent roll back angle, up to 44°

Separate attachment locking

Boom Suspension System

Attachment bracket, connecting to a range of Volvo attachments

Lock-up torque converter

Maintenance-free rear axle trunnions

Axles are cooled with forced oil circulation





External seatbelt
indicator

Comfort Drive Control,
lever steering

High rimpull Volvo powertrain,
rimpull control

Block handling
counterweight – standard-
duty or heavy-duty

Short overhang

Reversible
cooling fan

Brake wear
indicators

Strong frame
and central hinge
(Lifetime Warranty on
front/rear frames and
the articulation)

Heavy-duty
wheel rims

65-series
type tires

L150H, L180H, L220H block handlers

Tilttable cab

Larger lift
cylinders

Torque Parallel linkage with double
sealing on each pin (Lifetime
Warranty on the boom)

Excellent roll back
angle, up to 44°

Separate
attachment locking

100%
differential
locks on front
axles

Boom
Suspension
System

Attachment bracket,
connecting to a range
of Volvo attachments

Maintenance-free
rear axle trunnions

Axles are cooled with
forced oil circulation



**Comfort Drive Control,
lever steering**

**External seatbelt
indicator**

**High rimpull Volvo powertrain,
rimpull control**

**Block handling
counterweight**

Short overhang

**Reversible
cooling fan**

**Brake wear
indicators**

**Strong frame
and central hinge (Lifetime
Warranty on front/rear
frames and the articulation)**

**65-series
type tires**

**Lock-up torque
converter**



Configured for success

Volvo block handlers include all the features and functions found on a standard Volvo Wheel Loader, combined with the specialist equipment needed to succeed in block handling. In addition to the block handling package, there are a number of other options we can offer which are beneficial in this application.

•* Included in standard machine configuration

• Included in the Block handling package

o Optional equipment

| | VOLVO BLOCK HANDLERS (WL10518) | | | | |
|--|--------------------------------|-------|-------|---------------|------------|
| | L150H | L180H | L220H | L350H | |
| | | | | Standard-duty | Heavy-duty |
| Block Handler decal | • | • | • | • | • |
| Block handler lift cylinder | | | | • | • |
| Block handler extra lift capacity | | | | | • |
| Block handling counterweight | • | • | • | • | |
| Block handling counterweight, heavy-duty | | | | | • |
| Reversible cooling fan | • | • | • | • | • |
| Attachment bracket | • | • | • | • | • |
| Separate attachment locking | • | • | • | • | • |
| External seatbelt indicator | • | • | • | • | • |
| Boom Suspension System | • | • | • | • | • |
| Comfort Drive Control | o | o | o | •* | •* |
| Lube system | o | o | o | o | o |
| Refill pump for grease to lube system | o | o | o | o | o |
| Lube system for attachment bracket | o | o | o | o | o |
| Engine brake (applies to Stage V machines) | | | | o | o |
| External oil cooling for axles and brakes | o | o | o | o | o |



Do more

Only by using Volvo attachments can you be sure to get the most from your Volvo machine in terms of fuel efficiency and optimum lifting and break-out forces. Volvo offer a full attachment range engineered to deliver outstanding durability in quarry environments.

More information can be found in the Attachments brochure, or in the Attachments selector tool, available for IOS on App store, for Android on Play Store and China Android Store.

Breaker tine



Rake



Rock bucket – Spade nose or straight edge



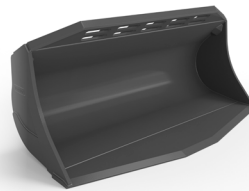
Stone fork



Block fork



Block handler bucket



Design applies to L350H

Attachment bracket

First introduced by Volvo in 1954, the ISO standardized attachment bracket enables quick, easy and safe switching between attachments.

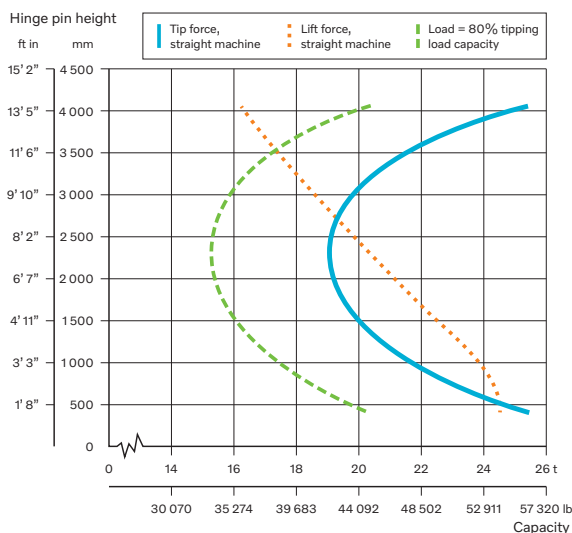
Custom-Built Attachments

When your operation requires a unique attachment design, then a custom-built attachment could be the answer. Receive support and tailored advice from your Volvo dealer and our in-house attachments specialist to help you define the right attachment specification for you.

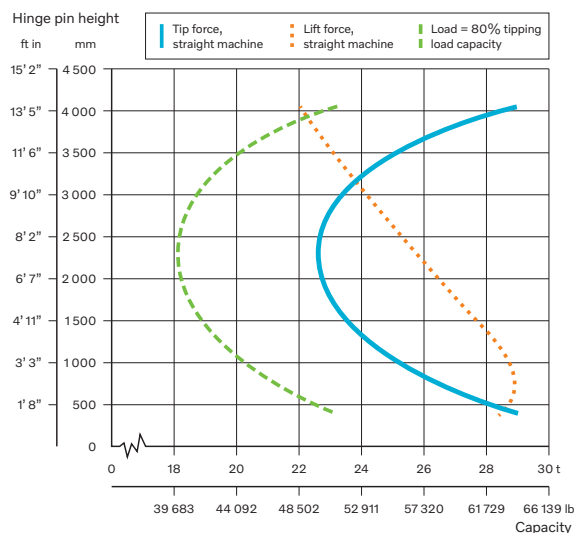


Specifications

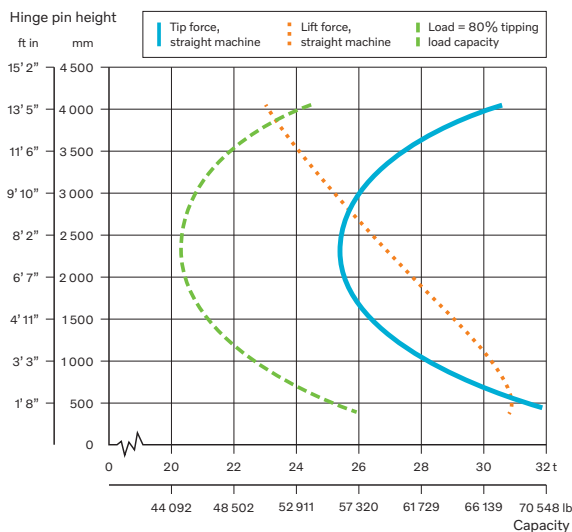
L150H



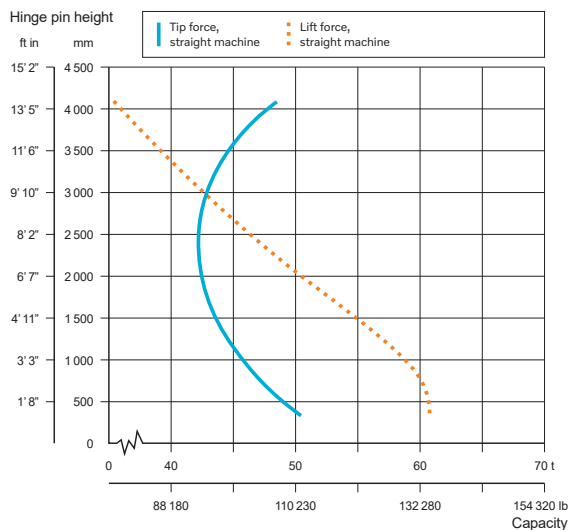
L180H



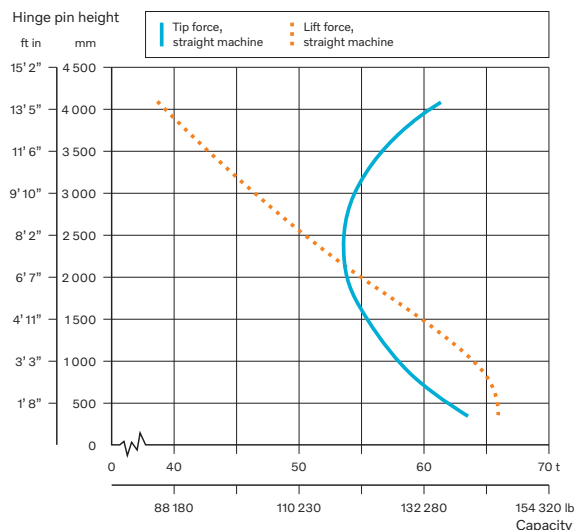
L220H

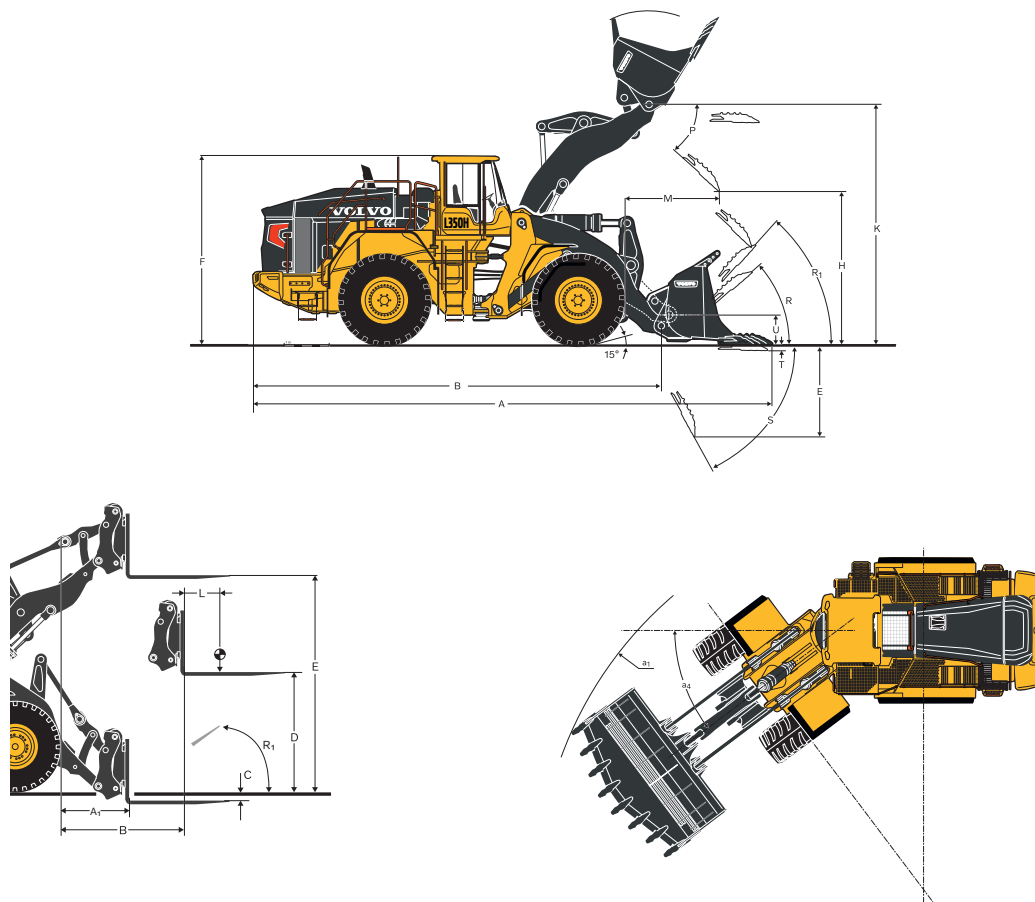


L350H Standard-duty



L350H Heavy-duty





| Equipped with block forks | | | L150H | L180H | L220H | L350H Standard-duty | L350H Heavy-duty |
|---------------------------------|--|------------|--------------------|--------------------|--------------------|------------------------|---------------------|
| A | Overall length | mm (ft in) | 9,125 (29'11") | 9,260 (30'5") | 9,615 (31'7") | 11,320 (37'2") | 11,520 (37'10") |
| A ₁ | Reach at min. lift | mm (ft in) | 970 (3'2") | 1,065 (3'6") | 1,140 (3'9") | 1,180 (3'11") | 1,180 (3'11") |
| B | Reach at tipping position | mm (ft in) | 1,740 (5'9") | 1,830 (6'0") | 1,905 (6'3") | 2,035 (6'8") | 2,035 (6'8") |
| C | Height at min. lift | mm (ft in) | -36 (-0'1.4") | 11 (0'4") | -18 (-0'7") | 132 (0'5.2") | 127 (0'5") |
| D | Height at tipping position | mm (ft in) | 2,020 (6'8") | 2,010 (6'7") | 2,090 (6'10") | 2,285 (7'6") | 2,290 (7'6") |
| E | Height at max. lift | mm (ft in) | 4,050 (13'3") | 4,180 (13'9") | 4,370 (14'4") | 4,650 (15'3") | 4,650 (15'3") |
| L | Load centre distance | mm (ft in) | 900 (2'11") | 900 (2'11") | 900 (2'11") | 900 (2'11") | 900 (2'11") |
| R ₁ | Max. rollback angle in carrying position | ° | 39 | 39 | 38 | 37 | 37 |
| Optional counterweight | | kg (lb) | 1,140 (2,510) | 1,140 (2,510) | 1,515 (3,340) | 2,425 (5,346) | 7,770 (17,130) |
| Operating weight (without load) | | kg (lb) | 26,230 (57,830) | 28,830 (63,560) | 34,040 (75,050) | 53,220 (117,330) | 58,560 (129,100) |

| Equipped with spade nose rock bucket | | | Pin on 3.5 m ³ | Hook on 4.2 m ³ | Hook on 4.5 m ³ | Hook on 6.3 m ³ | Hook on 6.3 m ³ |
|--------------------------------------|--|------------|---------------------------|----------------------------|----------------------------|----------------------------|----------------------------|
| A | Overall length | mm (ft in) | 8,880 (29'2") | 9,290 (30'6") | 9,755 (32'0") | 11,710 (38'5") | 11,915 (39'1") |
| a ₁ | Clearance circle | mm (ft in) | 15,040 (48'7") | 15,280 (50'2") | 16,130 (52'11") | 18,770 (61'7") | 18,770 (61'7") |
| a ₄ | Max. articulation angle | ° | 37 | 37 | 37 | 37 | 37 |
| B | Overall length w/o bucket / attach. bracket | mm (ft in) | 7,060 (23'2") | 7,200 (23'7") | 7,490 (24'7") | 9,135 (30'0") | 9,335 (30'8") |
| E | Digging depth, max dump (S) | mm (ft in) | 480 (1'10") | 1,770 (6'0") | 1,875 (6'2") | 2,150 (7'1") | 2,155 (7'1") |
| H | Dump clearance | mm (ft in) | 2,840 (9'4") | 2,810 (9'3") | 2,920 (9'7") | 3,080 (10'1") | 3,075 (10'1") |
| K | Max lifting arm height | mm (ft in) | 4,370 (14'4") | 4,500 (14'9") | 4,690 (15'5") | 5,075 (16'8") | 5,070 (16'8") |
| M | Dump reach | mm (ft in) | 1,415 (4'8") | 1,590 (5'3") | 1,800 (5'11") | 2,540 (8'4") | 2,540 (8'4") |
| P | Max. possible forward dump angle at K (max. HPH) | ° | 49.5 | 49.5 | 43 | 47 | 47 |
| R | Max. rollback angle at ground level | ° | 44.5 | 44.5 | 43 | 41 | 41 |
| R ₁ | Max. rollback angle in carrying position | ° | 47 | 47 | 45.5 | 44.5 | 44.5 |
| S | Max. forward dump angle at lowest lifting arm position | ° | 65 | 71 | 65.5 | 63 | 63 |
| T | Digging depth | mm (ft in) | 75 (0'3") | 130 (0'5.1") | 120 (0'4.7") | 140 (0'5.5") | 140 (0'5.5") |
| U | Hinge pin height in carrying position | mm (ft in) | 530 (1'9") | 530 (1'9") | 555 (1'10") | 623 (2'1.5") | 620 (2'1.4") |
| Bucket width | | mm (ft in) | 3,230 (127") | 3,230 (127") | 3,430 (135") | 3,960 (156") | 3,960 (156") |

More than machines

Engineering machines which deliver outstanding results is just the start of how we can support your operation. As your partner we are here to help with every aspect of your Volvo machinery: how you use it, maintain it, pay for it and even how you sell it. Our portfolio of services is designed to complement your machine's performance and boost your profitability.



24-hours parts delivery guarantee

Maintain productivity and machine uptime with our range of readily available parts, all backed by Volvo warranty – with 24-hour parts delivery guarantee. Only by using Genuine Volvo Parts, can you protect your investment, extend machine life and guarantee long lasting performance.

ActiveCare Direct

Maximize machine uptime and reduce repair costs with ActiveCare Direct. Utilizing CareTrack data, the intelligent service provides round the clock machine monitoring, as well as customer reports – to help take predictive and preventative maintenance actions.



Maintenance and repair agreements

Stay on track with planned servicing and keep your asset covered with our range of flexible maintenance and repair options.

Financial Services

Volvo knows business finance – and our team of experts are dedicated to helping you succeed. With flexible financial and insurance solutions, we can help grow and protect your business. From a single unit to an entire fleet, new or used, we'll customize a solution to meet your needs.

Lifetime Frame and Structure Warranty

Quality has long been a hallmark of the Volvo brand. Decades of experience, both in the field and in the laboratory, are today delivering unsurpassed frame and structure durability. We believe in the quality of our products – so much so that Volvo machines come with a Lifetime Frame and Structure Warranty, covering the frame, articulation joint and arm.

